



GASBOY

SERIES 1000

REPLACEMENT PARTS

C35354

REV. 03/07/03

Copyright 2003 by Gasboy International LLC All rights reserved.

The information in this document is confidential and proprietary. No further disclosure shall be made without permission from Gasboy International LLC. Gasboy International LLC believes that the information in this document is accurate and reliable. However, we assume no responsibility for its use, nor for any infringements of patents or other rights of third parties resulting from its use. We reserve the right to make changes at any time without notice.

GASBOY INTERNATIONAL LLC LANSDALE, PA

REPLACEMENT PARTS

This parts list is the same as the parts list appearing in the Series 1000 Diagnostic Manual, C08925.

The drawings and part lists on the following pages provide an easy reference for identifying Series 1000 parts and their corresponding part numbers. Using the part numbers when ordering will expedite your order and reduce the possibility of the wrong parts being shipped. Multiple views of the system are provided to ensure all parts are identified.

An asterisk (*) in front of a part number denotes that part is a sub-part of the preceding part without an asterisk. Consecutive part numbers with asterisks are all sub-parts of the first preceding part without an asterisk.

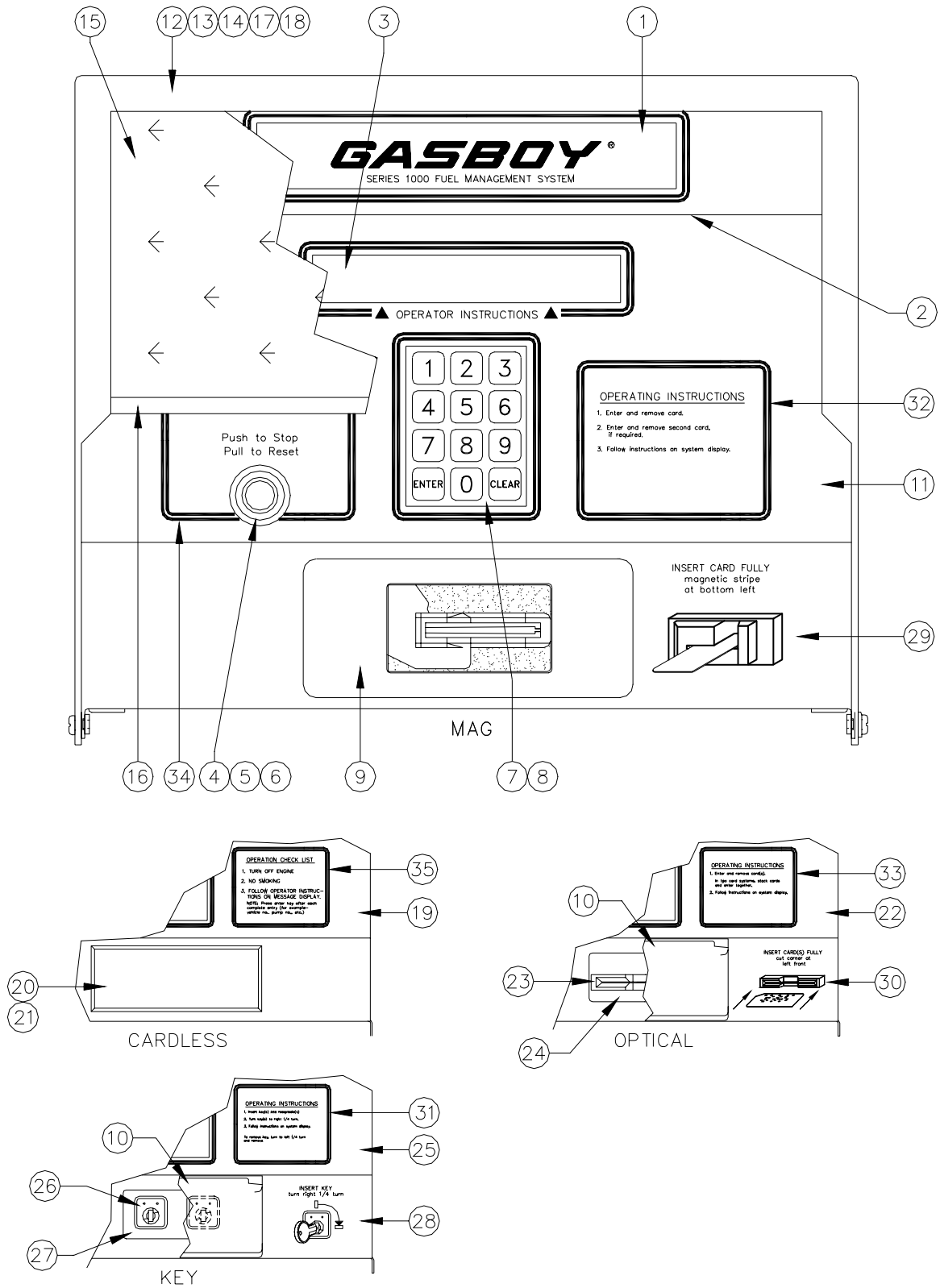
Example:

- 5. C05724 Cable Assy., Emergency Stop
- 6. *C08600 Switch Operator, Push-Pull, Red
- 7. *C08601 Switch, Contact Block, 1NO,-1NC

In the example, parts 6 and 7 are a sub-part of part 5. If part 5 was ordered, parts 6 and 7 would be included. If desired, part 6 or 7 could be ordered separately.

This compilation contains parts spotting drawings and descriptions for the following units:

Head - Front View, Silkscreened, Old Style	2
Head - Front View, Overlay, New Style	4
Head - Power Supply Side View	6
Head - MPU Side View	8
Head - Top View	10
Microprocessor (MPU) PCB	12
Auxiliary Communications Port PCB	14
Chassis In Post	16
Pedestal Assy, Star Printer, Right Side	18
Pedestal Assy, Star Printer, Left Side	20
Relay Module Assy	22



HEAD - FRONT VIEW, SILKSCREENED, OLD STYLE

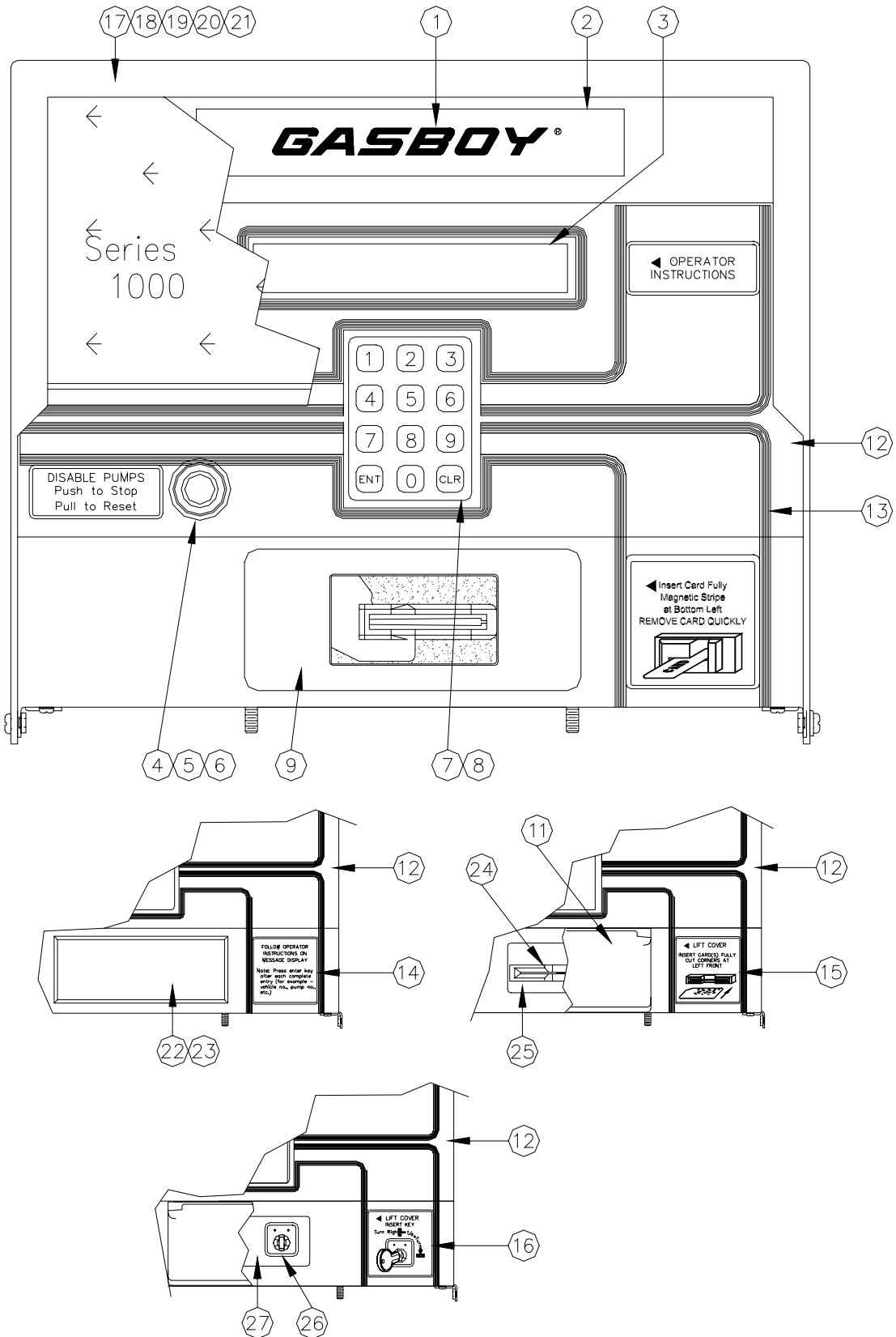
Item	Part No.	Description
1	C34836	Window, Silkscreen Display (White)
2	C34136	Window, Illumination (Clear)
3	C34755	Shield, LCD Display (Clear)
4	C05724	Cable Assy., Disable Pumps
5	*C08600	Switch Operator, Push - Pull, Red
6	*C01590	Contact Block, 1NC - #E22B1 (Not Shown)
	*C01591	Contact Block, 1NO - #E22B2 (Not Shown)
7	C08586	Keypad, 3 x 4 Sealed
8	*C01611	Keypad gasket
9	C09985	Mag Card Reader, Cable, and Gasket Assy.
10	C34843	Cover Assy., Card Reader (Not Shown; Optical and Key Only)
11		Silkscreen Mag Head Assy., (Metal Only) Not available; order C34747.
12	C05777	Housing Wrapper
13	*C34745	Housing Wrapper Weld Assy. (Metal Only)
14	*C34780	Bracket, Shield Retainer - Top (Metal Only)
15	*C34754	Shield, Housing Wrapper
16	*C04371	Trim Material - Edge (Order 2 Feet)
17	*C08741	Gasket, Bulk 3/ 16 x 1/2 (Hood Rear Seal - Order 4 Feet)
18	C08739	Wing nut, 1/4-20
19		Silkscreen cardless head assembly Not available; order C34747.
20	C35256	Cover plate, non-reader
21	C01655	Gasket, non-reader plate
22		Silkscreen, optical head assembly (metal only) Not available; order C34747.
23	C05631	Optical Reader Assy.
24	C34841	Adapter plate, optical reader (metal only)
25	C35289	Silkscreen Key head assembly
26	C02848	Key receptacle
27	C35298	Adapter plate, key receptacle, 1-key (metal only)
	C35287	Adapter plate, key receptacle, 2-key (metal only)
28	C01519	Decal, Insert Key... (FleetKey Systems)
29	C01307	Decal, Insert Card Fully... (Mag Card Systems)
30	C01305	Decal, Insert Card(s) Fully... (Optical Card Systems)
31	C01518	Decal, Operating Instructions... (FleetKey Systems)
32	C01308	Decal, Operating Instructions... (Mag Card Systems)
33	C01306	Decal, Operating Instructions... (Optical Card Systems)
34	C01310	Decal, Disable Pumps
35	C01309	Decal, Operation Check List... (Cardless Systems)

*Denotes this is a sub-part used in the preceding assembly

IMPORTANT: The new style card reader (Panasonic) works only with Series 1000 versions 3 or later. To check your version: At the Series 1000 data terminal, type the **PR** command at the asterisk prompt. The version, program name, and date displays. If your version is 1 or 2, consult your distributor before proceeding.

FleetKeys (Not Shown)

C01625	FleetKey, Black
C01624	FleetKey, Gray
C01623	FleetKey, Green



HEAD - FRONT VIEW, OVERLAY, NEW STYLE

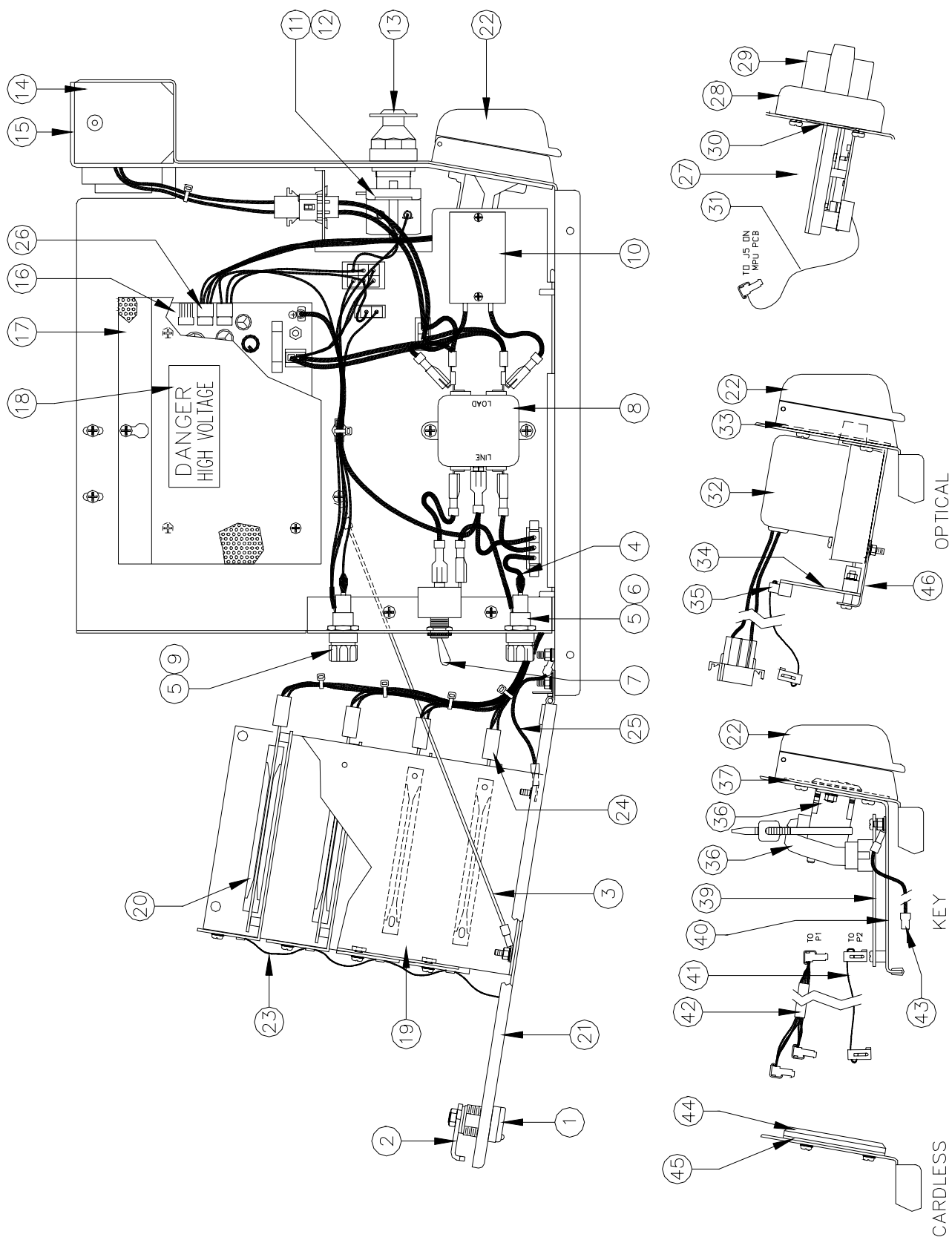
Item	Part No.	Description
1	C01231	Decal, GASBOY, Blue Background
2	C34847	Window, Display, Blank, White
3	C34755	Shield, LCD Display
4	C05724	Cable Assy., Disable Pumps
5	*C08600	Switch Operator, Push-Pull, Red
6	*C01590	Contact Block, 1NC - #E22B1 (Not Shown)
	*C01591	Contact Block, 1NO - #E22B2 (Not Shown)
7	C08586	Keypad, 3 x 4 Sealed
8	*C01611	Keypad gasket
9	C09985	Mag Card Reader, Cable, and Gasket Assy.
11	C34843	Cover Assy., Card Reader (Not Shown; Optical and Mag Only)
12	C34747	Painted Head Assy., (Metal Only)
13	C09500	Overlay, Head, Mag (<i>NOTE: If system is not mag, order one of item 14, 15 or 16 depending on system type.</i>)
14	C09498	Decal Insert, Cardless (For use with C09500 only)
15	C09497	Decal Insert, Optical (For use with C09500 only)
16	C09499	Decal Insert, Key (For use with C09500 only)
17	C06615	Housing Wrapper Assy.
18	*C35470	Housing Wrapper Weld Assy.
19	*C34780	Bracket, Shield Retainer - Top (Metal Only)
20	*C35494	Shield, Clear, 1/4 thick
21	*C01989	Gasket, Bulk, 1/4 x 1/2 (4 ft)
22	C35256	Cover Plate, Non-reader
23	C01655	Gasket, non-reader plate
24	C05631	Optical reader Assy.
25	C34841	Adapter plate, optical reader (metal only)
26	C02848	Key receptacle
27	C35298	Adapter plate, key receptacle, 1-key (metal only)
	C35287	Adapter plate, key receptacle, 2-key (metal only)

*Denotes this is a sub-part used in the preceding assembly

IMPORTANT: The new style card reader (Panasonic) works only with Series 1000 versions 3 or later. To check your version: At the Series 1000 data terminal, type the **PR** command at the asterisk prompt. The version, program name, and date displays. If your version is 1 or 2, consult your distributor before proceeding.

FleetKeys (Not Shown)

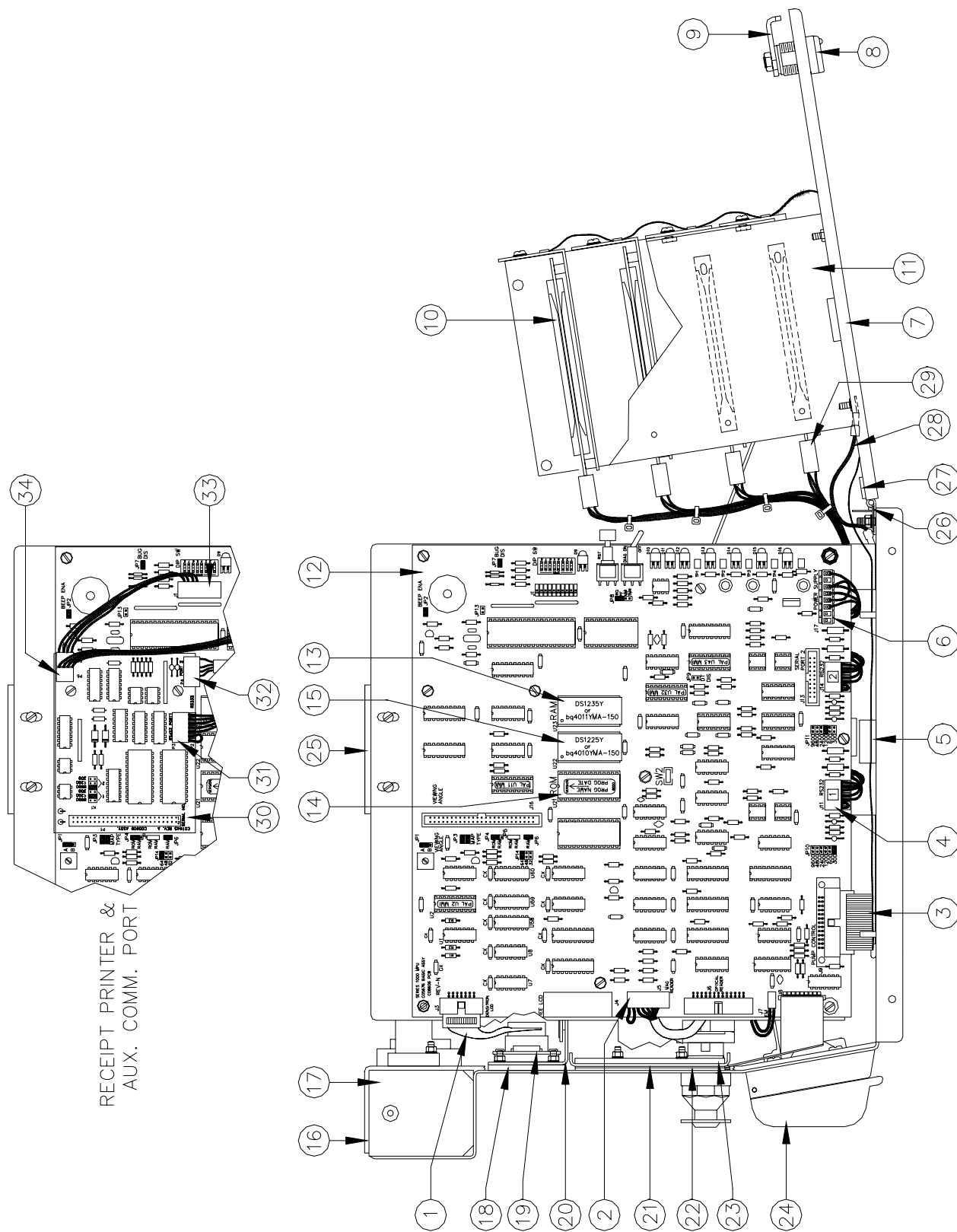
C01625	FleetKey, Black
C01624	FleetKey, Gray
C01623	FleetKey, Green



HEAD - POWER SUPPLY SIDE VIEW

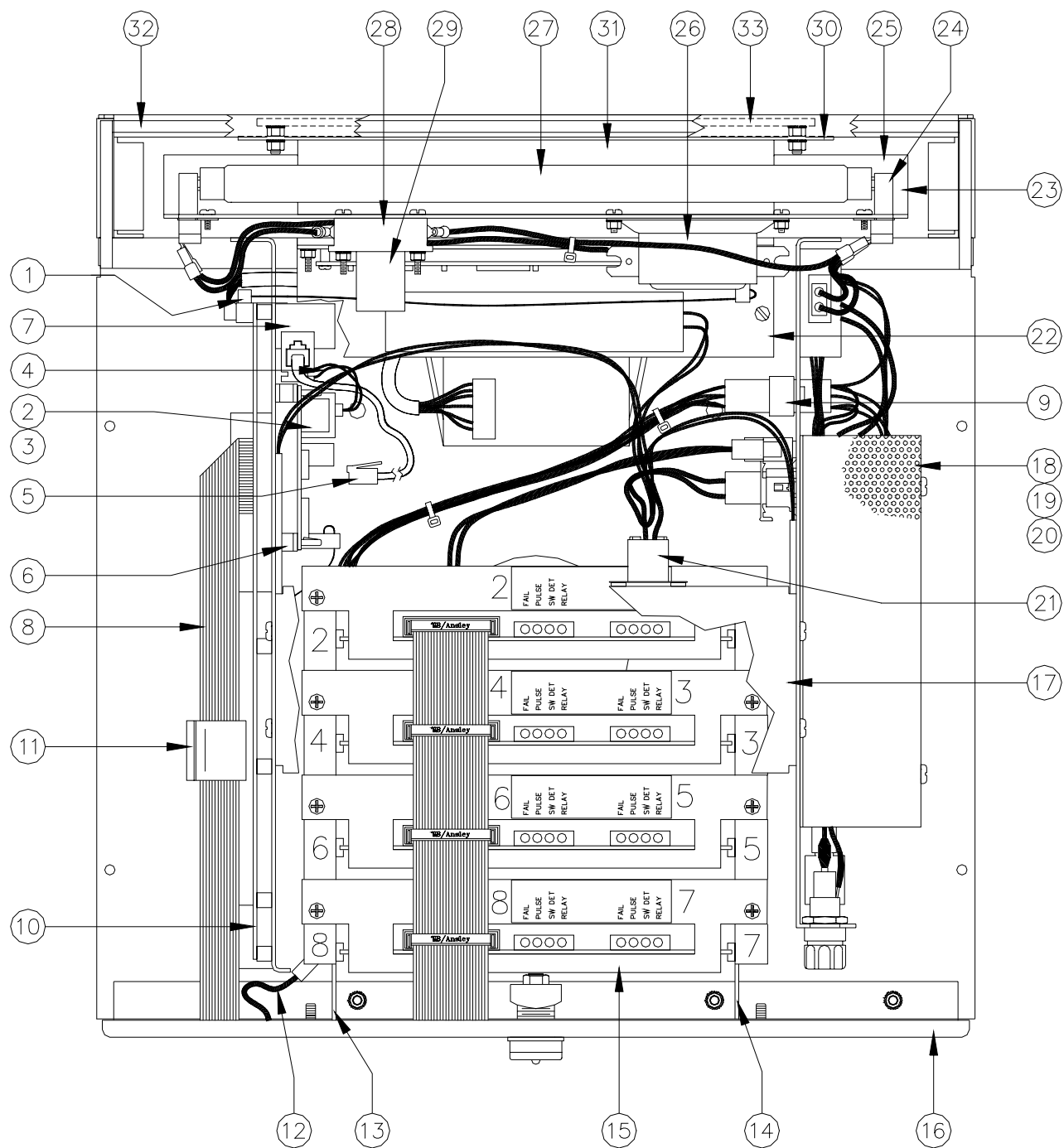
Item	Part No.	Description	Item	Part No.	Description
1	035009	Lock and Key	27	C09985	Mag Card reader, cable and gasket assy.
2	C34753	Cam for Lock, Rear Door	28	*C09989	Adapter Plate
3	C08709	Cable/Eye Assy., Door Catch, 12" Long	29	*C09988	Mag Card Reader
4	C05714	Harness Assy., Power	30	*C34613	Gasket
5	*C02065	Fuse Holder, Solder Term., Panel Mount OR	31	*C06169	Cable
	*C09546	Fuse Holder, Quick Conn.	32	C05631	Optical reader assy.
6	*C02634	Fuse 3A, Slow Blow, 1/4 x 1-1/4		*C05629	Lamp Housing (Series 1000)
7	*C02704	Switch, Toggle, SPST, 15A Spade		*C04406	Glass w/metal edge
8	*C02446	Line Interference Filter, 5A	33	C34841	Adapter plate, optical reader (Metal only)
9	*C08593	Fuse, 1.5A., Quick Blow, 1/4 x 1-1/4	34	C05788	PCB Assy., edge conn to ribbon cable
10	C05733	Cable Assy., Transzorb	35	C04853	Cable assy., ribbon optical reader
11	C05724	Cable Assy., Disable Pumps	36	C02848	Key receptacle and tie wrap
12	*C01590	Contact Block, 1NC - #E22B1 (Not Shown)	37	C35298	Adapter plate, key receptacle, 1-key (metal only)
	*C01591	Contact Block, 1NO - #E22B2 (Not Shown)		C35287	Adapter plate, key receptacle, 2-key (metal only)
13	*C08600	Switch Operator, Push - Pull, Red	38	C06267	Cable Assy., 10-pos Key ribbon
14	C34826	Guide, Light Shield	39	C06264	PCB Assy, Key I/F
15	027146	Gasket, 1/8 x 1/4 x 3 Feet Long (Order 2 Pieces)	40	C35288	Bracket assy., Key I/F PCB mounting (metal only)
16	C09053	Power Supply, 50W., 5V./12V.	41	C05435	Cable assy., 26-pos, ribbon
17	C34769	Cover, Power Supply (Metal Only - Also Order Item #18)	42	C06266	Cable assy., Key I/F - CPU w/o receipt printer
18	C08756	Label, "DANGER, HIGH VOLTAGE"		C06291	Cable assy., Key I/F - CPU w/receipt printer
19	C34733	PCB Support Bracket Assy., (Power Supply Side - Metal Only)	43	C06178	Cable assy., ground strap, 4.5"L
20	C02518	Card Guide		C05644	Cable assy., ground strap, 13"L
21	C34728	Door Weld Assy. (Metal Only)	44	C35256	Cover plate, non-reader
22	C34843	Cover assembly, card reader (Optical and Key only)	45	C01655	Gasket, non-reader plate
23	Cable Assy., Ribbon, PC to MPU		46	C35292	Bracket, Optical Interface PCB retainer (subpart of 34)
	C05722	8 pump			
	C05766	6 pump			
	C05767	4 pump			
	C05768	2 pump			
24	C05689	Cable assy., switch detect, pulser, PC			
25	C05776	Ground wire assy.			
26	C05707	Cable assy., MPU DC power			

*Denotes this is a sub-part used in the preceding assembly



HEAD - MPU SIDE VIEW

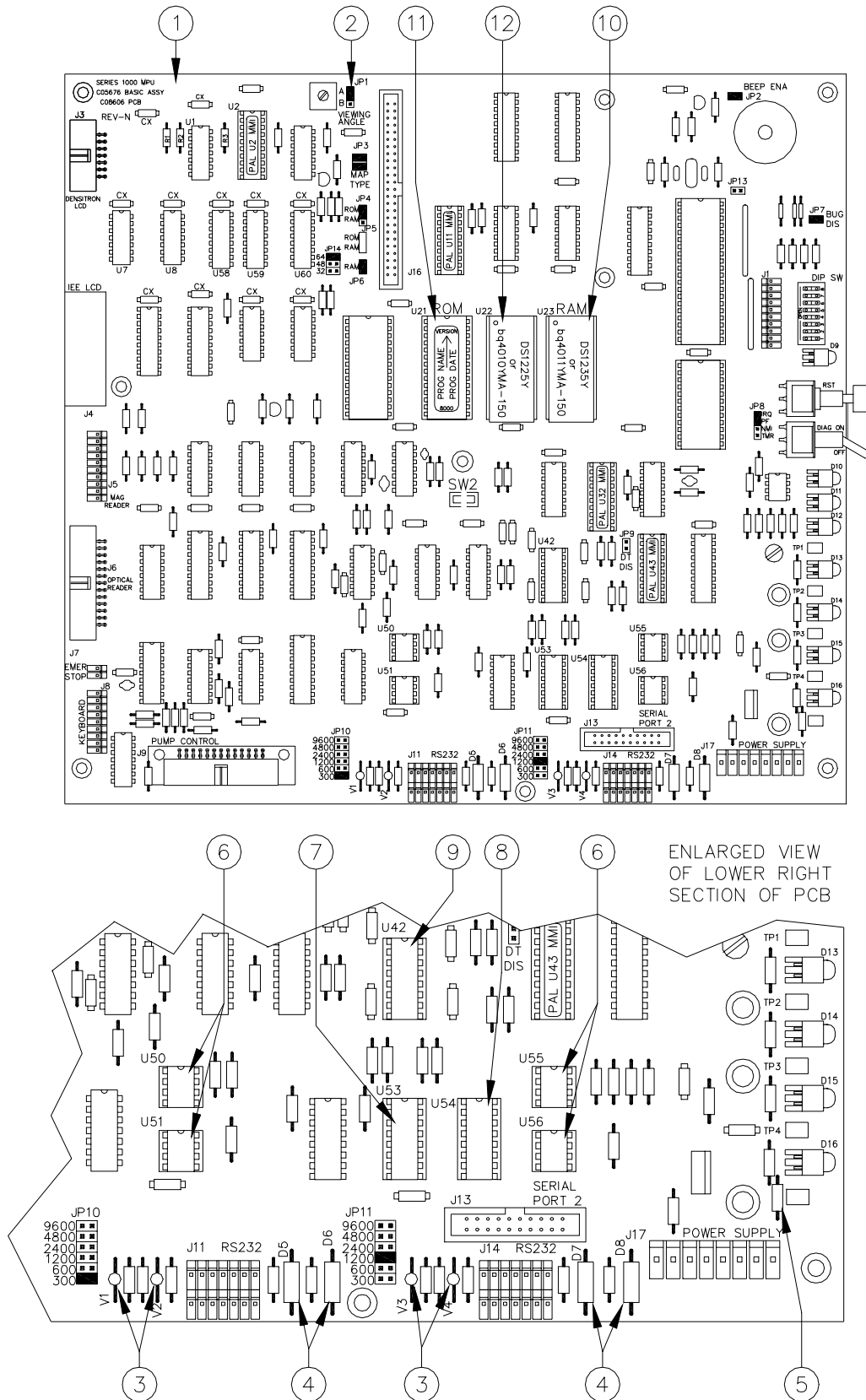
Item	Part No.	Description
1	C05708	Cable Assy., Ribbon LCD
2	C05938	Cable Assy., Mag Card Reader Insertion (Rev. B)
3	C05722	Cable Assy., Ribbon, PC to MPU, 8 Pumps
	C05766	Cable Assy., Ribbon, PC to MPU, 6 Pumps
	C05767	Cable Assy., Ribbon, PC to MPU, 4 Pumps
	C05768	Cable Assy., Ribbon, PC to MPU, 2 Pumps
4	C05706	Cable Assy., Serial Ports and Pulser Power
5	C02207	Clamp, Ribbon Cable
6	C05707	Cable Assy., MPU - DC Power
7	C34728	Door Weld Assy., (Metal Only)
8	035009	Lock and Key
9	C34753	Cam For Lock, Rear Door
10	C02518	Card Guide
11	C34729	PCB Support Bracket Assy., (MPU Side - Metal Only)
12	C05676	PCB Assy., MPU
13	C08629	IC, RAM - 32K x 8 CMOS, Non-Volatile (Dallas DS1235Y or Benchmarq bq4011YMA-150)
14	CPK002	Program, Series 1000 IC, EPROM - 32K x 8, Programmed
15	C08643	IC, RAM, 8K x 8 CMOS (standard versions 8.1 or higher or FleetKey software only)
16	027146	Gasket, 1/8 x 1/4 x 3 Feet Long (Order 2 Pieces)
17	C34826	Guide, Light Shield
18	C34755	Shield, LCD display (clear)
19	C05770	LCD Display and Header Assy.
20	C34767	LCD bracket assy. (metal only)
21	C08586	Keypad, gasket, bracket assy.
22	*C01611	Gasket, keypad
23	*C35303	Bracket, keypad (metal only)
24	C34843	Cover assy., card reader
25	C34825	Bracket, wrapper assy., support
26	026980	Gasket, 1/16 x 1/8 x 3 feet long (order 1 piece)
27	C01989	Gasket, 1/4 x 1/2 (order 2 feet)
28	C05776	Ground wire assy
29	C05689	Cable assy., switch detect, pulser, PC
30	C05909	PCB Assy., Aux. Comm. Port
31	C05918	Cable Assy., Aux. Comm. - 24" standard unit
	C06090	Cable Assy., Aux. Comm. - 48" w/receipt printer
32	C06087	Cable assy., printer RS-232 communication
33	C05919	Cable assy., Aux. Comm. to MPU
	C06291	Cable assy., Aux. Comm. to MPU for Key system
34	C06085	Cable assy., printer and lamps



HEAD - TOP VIEW

Item	Part No.	Description
1	C05708	Cable Assy., Ribbon, LCD Display
2	C05739	Modem Assy., 300/1200 Baud Kit
	*C05738	Cable Assy., 20-position ribbon (Not Shown)
3	*C07122	Modem, Internal 2400
4	*C05737	Cable Assy., Phone Line Jack
5	*C05356	Cable Assy., 4 Conductor Phone Line, 8 Feet
6	*C02896	Support, PCB, 3/8 Long Plastic
7	*C34821	Bracket, Phone Jack (Metal Only)
8	C05722	Cable Assy., Ribbon, PC to MPU, 8 Pumps
	C05766	Cable Assy., Ribbon, PC to MPU, 6 Pumps
	C05767	Cable Assy., Ribbon, PC to MPU, 4 Pumps
	C05768	Cable Assy., Ribbon, PC to MPU, 2 Pumps
9	C05725	Cable Assy., Pump Control Power, 8 Pumps
	C05726	Cable Assy., Pump Control Power, 6 Pumps
	C05727	Cable Assy., Pump Control Power, 4 Pumps
	C05728	Cable Assy., Pump Control Power, 2 Pumps
10	C05676	PCB Assy., MPU
11	C02207	Clamp, Ribbon Cable
12	C05776	Ground Wire Assy.
13	C34729	PCB Support Bracket Assy. (MPU Side-Metal Only)
14	C34733	PCB Support Bracket Assy. (Power Supply Side - Metal Only)
15	C05677	PCB Assy., PCU (PCB and Bracket)
16	C34728	Door Weld Assy. (Metal Only)
17	C34825	Bracket, Wrapper Assy. Support
18	C09053	Power Supply, 50W 5V./12V. (Not Shown)
19	C34769	Cover, Power Supply (Metal Only)
20	C08756	Label, "DANGER, HIGH VOLTAGE" (Not Shown)
21	C05732	Cable Assy., Heaters and Thermostat
22	C34768	Bracket, LCD Heater Mounting
23	C05701	Lamp Bracket Assy.
24	*033393	Lampholder, Fluorescent Miniature
25	*C34752	Bracket, Lamp Fluorescent (Metal Only)
26	*C08692	Ballast, 4 - 6 - 8W.
27	*C08690	Lamp, Fluorescent, F8T5, Miniature
28	*058108	Starter Socket
29	*058109	Starter, Fluorescent
30	C34765	Panel, Display Light Screen (Metal Only)
31	C34136	Window, Illumination (Clear)
32	027146	Gasket, 1/8 x 1/4 x 3 Feet, Long (Order 2 Pieces)
33	C34836	Window, silkscreen display (white)

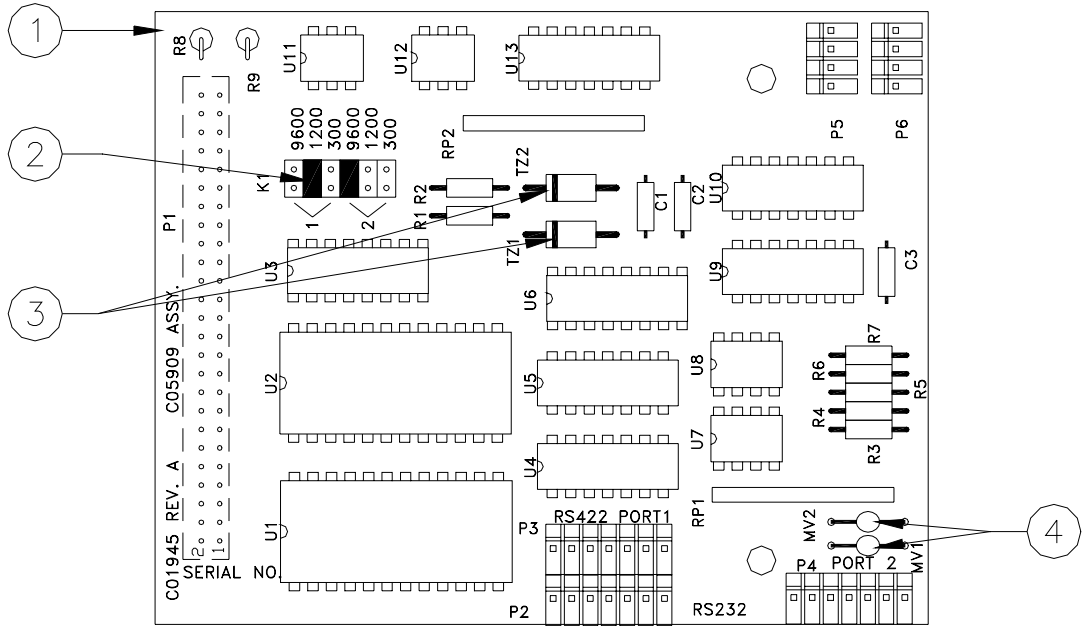
*Denotes this is a sub-part used in the preceding assembly



MICROPROCESSOR (MPU) PCB

Item	Part No.	Description
1	C05676	PCB Assy., MPU
2	*C03315	Connector, Jumper - 2 Position Female, .100 CL
3	*C08657	Varistor, 56 VDC (Total - 4)
4	*C08512	Transzorb, 8.5 VDC (Total - 4)
5	*C08799	Fuse, 5A., Pico
6	*C02977	IC, 6N138 RS422 opto receiver (Total - 4)
7	*C02268	IC, 1489P RS232 receiver
8	*C02267	IC, 1488P RS232 driver
9	*C02978	IC, 26LS30 or 3691 RS422 line driver
10	C08629	IC, RAM - 32K x 8 CMOS, non-volatile(Dallas DS1235Y or Benchmarq bq4011YMA-150)
11	CPK002	Program, Series 1000
12	C08643	IC, RAM - 8K x 8 CMOS, non-volatile (standard versions 8.1 or higher or FleetKey software only)

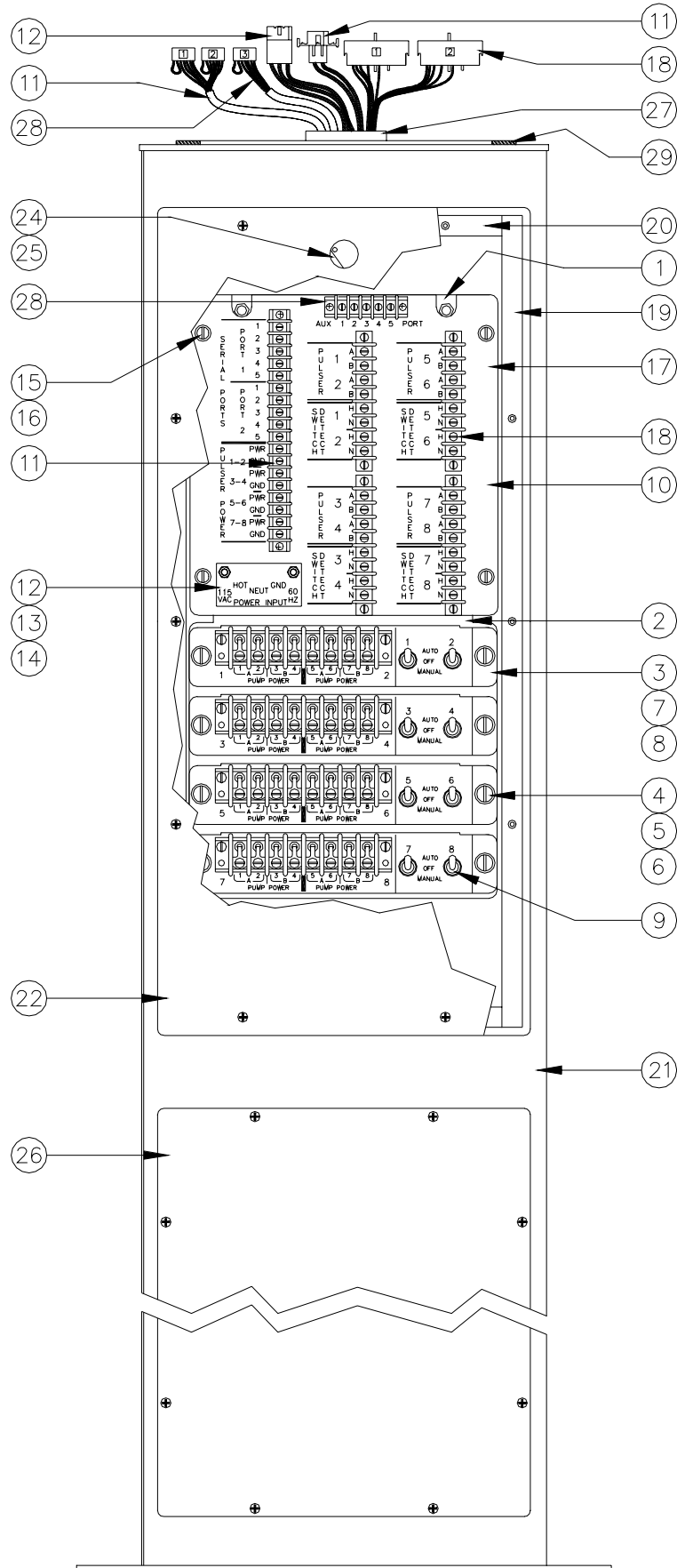
*Denotes this is a sub-part used in the preceding assembly



AUXILIARY COMMUNICATIONS PORT PCB ASSY.

Item	Part No.	Description
1	C05909	PCB Assy., Auxiliary Communications Port
2	*C03315	Connector, Jumper - 2 position Female, .100CL
3	*C08512	Transzorb, 8.5VDC (Port 1 - Order 2)
4	*C08657	Varistor, 56VDC (Port 1 - Order 2)

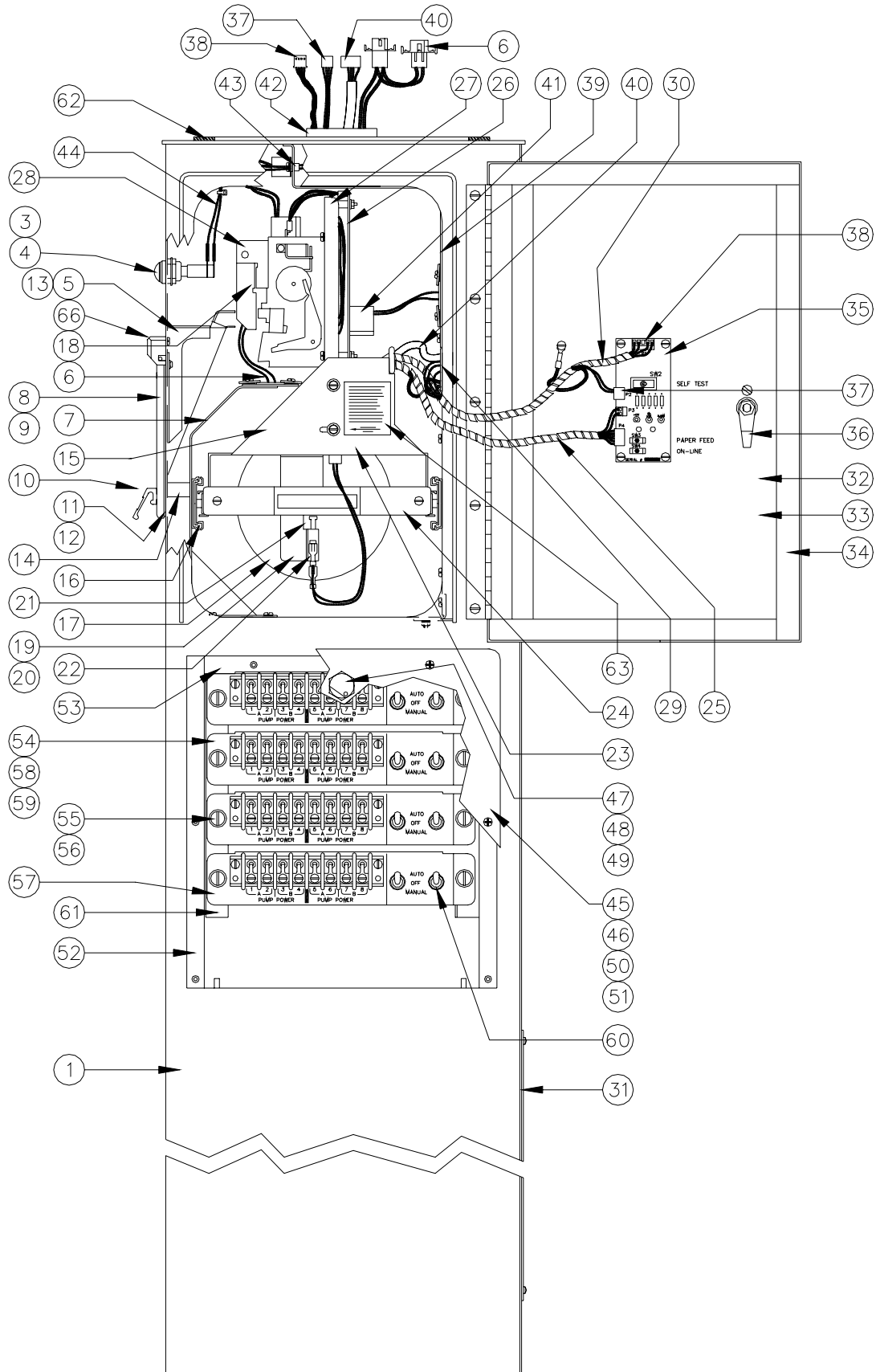
*Denotes this is a sub-part used in the preceding assembly



CHASSIS IN POST

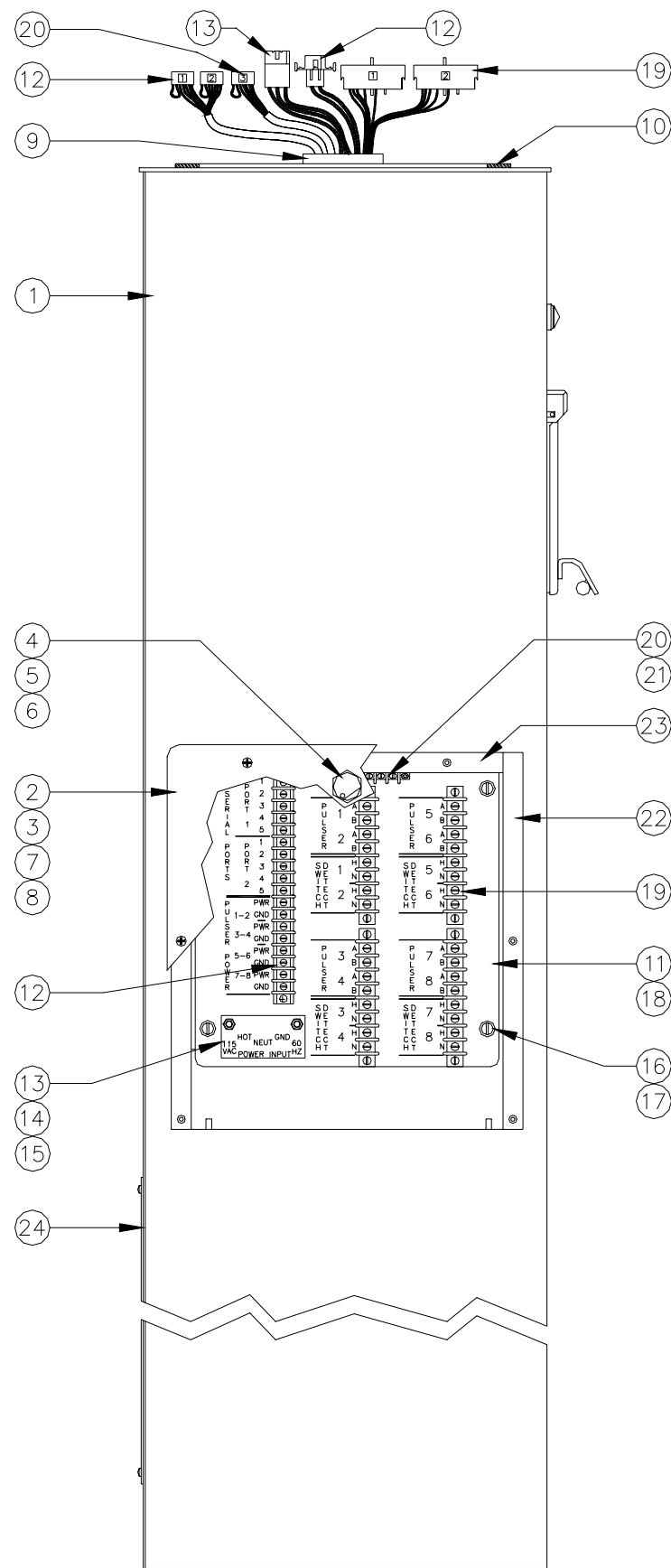
Item	Part No.	Description
1	C05716	Chassis Assy., 8 Pump (includes parts 2, 3, 10 and subparts)
	C04684	Chassis Assy., 6 Pump (includes parts 2, 3, 10 and subparts)
	C04685	Chassis Assy., 4 Pump (includes parts 2, 3, 10 and subparts)
	C04686	Chassis Assy., 2 Pump (includes parts 2, 3, 10 and subparts)
2	C34618	Bracket Weld Assy., Pedestal Chassis (Metal Only)
3	C05687	Relay Module Assy., 2 Hose Outlets
4	*C03285	Screw, captive slot
5	*C03286	Washer, retaining
6	*C34617	Bracket, dual relay (metal only)
7	*C08746	Relay, solid state, 240VAC/40A. SPST (not shown)
8	*C04477	Relay, solid state, 240VAC/25A. SPST (not shown)
9	*C02064	Switch, DPDT, Center off
10	C05709	Bracket Assy., 8 Pump, Pwr. - Comm. - Pul.
	C04681	Bracket Assy., 6 Pump, Pwr. - Comm. - Pul.
	C04682	Bracket Assy., 4 Pump, Pwr. - Comm. - Pul.
	C04683	Bracket Assy., 2 Pump, Pwr. - Comm. - Pul.
11	*C05706	Cable Assy., Serial Ports and Pulser Power
12	*C05713	Cable Assy., AC Power Input
13	*C31922	TB, Cover, 3 - Position (Also Order Item #14)
14	*C08691	Decal, 115 VAC Power Input, Red
15	*C03285	Screw, Captive Slot
16	*C03286	Washer, Retaining
17	*C34751	Bracket Weld Assy., Power and Comm. (Metal Only)
18	*C05689	Cable Assy., Switch Detect - Pulser - PC
19	C34762	Gasket, Punched 3/8 x 1/2 x 24 Long
20	C34763	Gasket, Punched 3/8 x 1/2 x 11 Long
21	C34710	Pedestal Weld Assy. (metal only)
22	C34713	Door weld assy., pedestal access (metal only)
24	035009	Lock and Key
25	0M0049	Cam for lock, pedestal cover (not shown)
26	C34712	Door, base access (metal only)
27	C08307	Bushing, snap-in
28	C05918	Cable assy., aux. comm. - 24"
29	026886	Gasket, 1/8 x 3/8 bulk (order 3 feet)

*Denotes this is a sub-part used in the preceding assembly



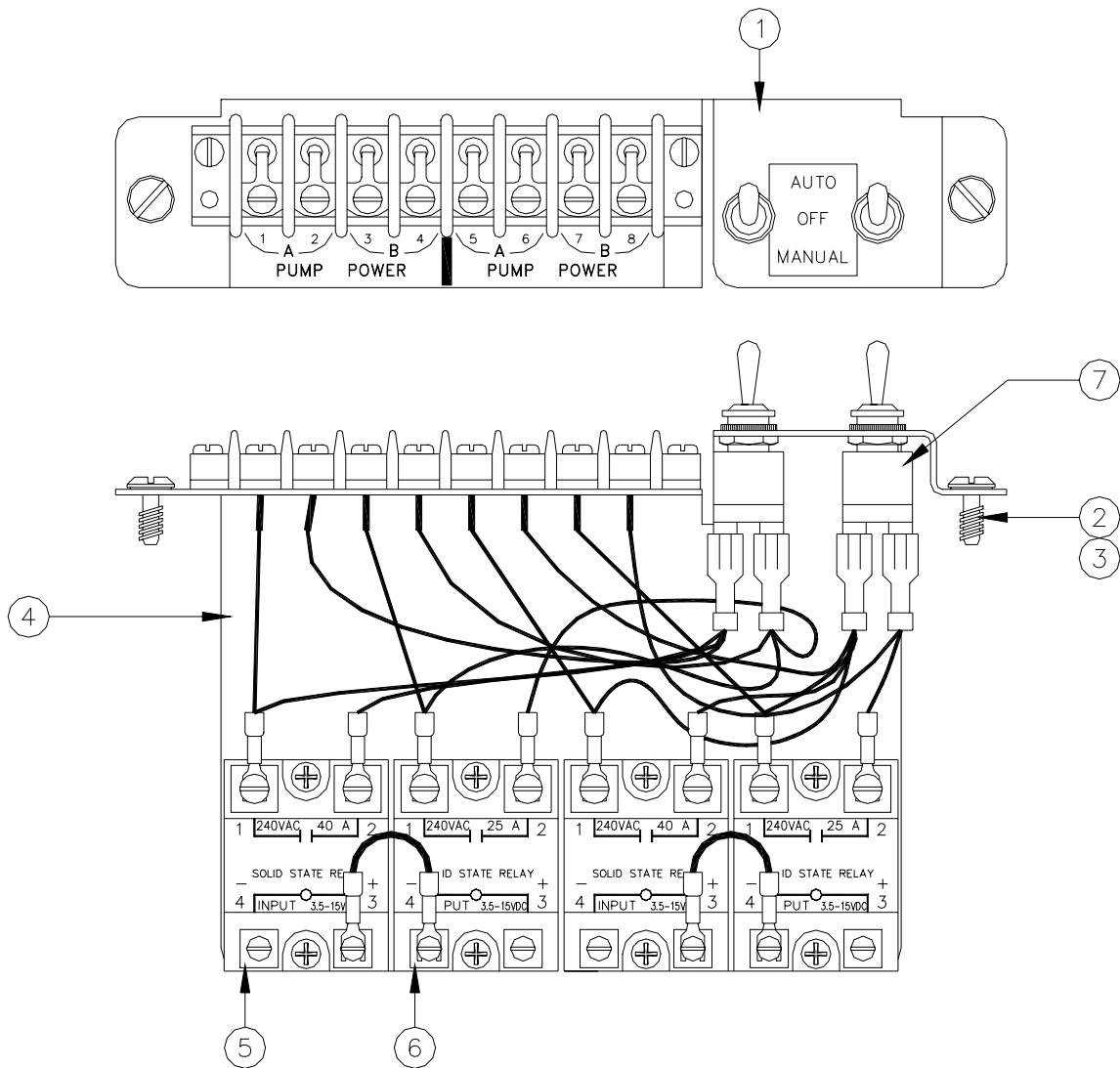
PEDESTAL ASSY., SERIES 1000, STAR PRINTER - RIGHT SIDE

Item	Part No.	Description	Item	Part No.	Description
1	C35367	Pedestal Weld Assy.	37	C05394	Cable Assy., Aux PCB (Subpart of 44)
3	C08945	Lamp, 44 Miniature Bayonet T-3-1/4 6.3V (Old Style)	38	C05395	Cable Assy., Printer Power (Subpart of 44)
4	C09682	LED Indicator (New Style)	39	C34979	Bracket, Printer Heat Shield
5	C34993	Paper Chute Weld Assy.	40	C06087	Cable Assy., RS-232 Communication
6	C06086	Cable/Heater Assy.	41	C02207	Clamp, Ribbon Cable
7	C34981	Bracket Weld Assy., Front Slide	42	C08307	Bushing, Snap-In 1.969 ID - Nylon
8	C06996	Door Assy., Receipt Access	43	0M0068	Bushing, Snap-In 1/4 ID Nylon
<i>NOTE: When ordering item 8, a part number from item 9 must be specified to select the appropriate silkscreen.</i>			44	C06085	Cable Assy., Printer and Lamps (Combines 30, 37, & 38)
9		Silkscreened Receipt Door	45	C06220	Cover Assy., Pedestal Side Access
	*C35124	English card	46	*C35148	Cover weld Assy., pedestal side access (metal only)
	*C35295	English cardless	47	*035009	Lock and Key
	*C35296	English key	48	*C34753	Cam for lock (not shown)
	*C35800	French card	49	*026799	Gasket, lock (not shown)
	*C35802	French cardless	50	*027072	Gasket, 1/16 x 3/4 (order 3 feet)
	*C35801	French key	51	*027073	Gasket, 1/16 x 3/4 (order 1 foot)
10	*C08108	Handle, Pull	52	C35175	Gasket, Punched - Vertical
11	*C01989	Gasket, 1/2 W x 1/4 T	53	C34763	Gasket, Punched - Horizontal
12	*C34975	Catch Plate	54	C05687	Relay Module Assy., 2 hose outlets
13	C35015	Bracket, Receipt Paper Catch	55	*C03285	Screw captive slot
14	C01741	Mag Catch, Snap-In .43 x 2.56	56	*C03286	Washer, retaining
15	C05672	Printer, Slide Assy.	57	*C34617	Bracket, dual relay (metal only)
16		Slide Assy., 12" PR-Modified (Order P/N C05672)	58	*C08746	Relay, solid state, 240VAC/40A. SPST (not shown)
17	*C08946	Paper, #RF - 4.5-5 Low Bulk	59	*C04477	Relay, solid state, 240VAC/25A. SPST (not shown)
18	*C08941	Ribbon, Star Receipt Printer	60	*C02064	Switch DPDT, Center Off
19	*C34994	Bracket, Paper Support (RH)	61	C35146	Bracket weld Assy., front
20	*C34986	Bracket, Paper Support (LH)	62	026886	Gasket, 1/8 x 3/4 bulk (order 3 feet)
21	*C34970	Roller, Printer Paper Support	63	C08883	Label, Star Printer Maintenance (Subpart of 16)
22	*C03334	Switch, SPDT Snap Action	64	C01452	Decal, Paper Feed, Star (not shown; subpart of 32)
23		Bracket, Slide Mount Weld Assy. (Order P/N C05672)	65	C08847	Decal, Brd Status, Star (not shown; subpart of 32)
24	*C34984	Bracket, Slide Assy. Shield	66	C35128	Receipt Printer Door Hinge
25	*C05285	Cable Assy., Paper Low + Printer Control	*Denotes this is a subpart used in the preceding assembly		
26	*C08933	PCB, Controller #BD83SNM-12			
	*C06007	Cable Assy., 12-pos, 3-7/8 Lg.			
	*C06008	Cable Assy., 10-pos, 3-7/8 Lg.			
27	*C34987	Bracket, Printer Mounting Weld Assy.			
28	*C08932	Printer w/ Paper Cut #DP834CP-12			
29	C02827	Bushing, Snap-In 1" ID - Nylon			
30	C01985	Cable Spirol Wrap 1/4 O.D. (Subpart of 25 and 44)			
31	C33540	Cover, Rear Access 10 x 14			
32	C05789	Door Assy., Printer Access			
33	*C35012	Door Assy., Printer (Metal Only)			
34	*C01990	Gasket, Bulk 5/8 T x 3/4 W Self-Adhesive			
35	*C04665	PCB Assy., Printer Power/Test			
36	*035004	Lock, Southco			
	*035003	Key, Southco (not shown)			



PEDESTAL ASSY., SERIES 1000, STAR PRINTER - LEFT SIDE

Item	Part No.	Description
1	C35367	Pedestal Weld Assy.
2	C06220	Cover assy., pedestal side access
3	*C35148	Cover weld assy. pedestal side access (metal only)
4	*035009	Lock and key
5	*C34753	Cam for lock
6	*026799	Gasket, lock
7	*027072	Gasket, 1/16 x 3/4 (order 3 feet)
8	*027073	Gasket, 1/16 x 1/4 (order 1 foot)
9	C08307	Bushing, snap-in, 1.969 ID - nylon
10	026886	Gasket 1/8 x 3/4 bulk (order 3 feet)
11	Bracket Assy.	
	C05955	8 pump, pwr. - comm.- pulser
	C05956	6 pump, pwr. - comm.- pulser
	C05957	4 pump, pwr. - comm.- pulser
	C05958	2 pump, pwr. - comm.- pulser
12	*C06089	Cable assy., serial ports and pulser power
13	*C06088	Cable assy., AC power input
14	*C31922	TB, cover, 3-position (also order item #15)
15	*C08691	Decal, 115 VAC power input, red
16	*C03285	Screw, captive slot
17	*C03286	Washer, retaining
18	*C35264	Bracket weld assy., power and comm (metal only)
19	*C06091	Cable assy., switch detect, - pulser - PC
20	*C06090	Cable assy., aux comm.
21	*C35264	Bracket assy., aux. TB
22	C35175	Gasket, punched, vertical
23	C34763	Gasket, punched, horizontal
24	C33540	Cover, rear access 10 x 14



RELAY MODULE ASSY.

Item	Part No.	Description
1	C05687	Relay Module Assy., 2 Hose Outlets
2	*C03285	Screw, Captive Slot
3	*C03286	Washer, Retaining
4	*C34617	Bracket, Dual Relay (Metal Only)
5	*C08746	Relay, Solid State, 240VAC/40A. SPST
6	*C04477	Relay, Solid State, 240VAC/25A. SPST
7	*C02064	Switch, DPDT, Center Off

*Denotes this is a sub-part used in the preceding assembly

WARRANTY

General Statements:

Gasboy International LLC. warrants all new equipment manufactured by Gasboy against defective material and/or workmanship, for the warranty period specified below, when the equipment is installed in accordance with specifications prepared by Gasboy.

This warranty does not cover damage caused by accident, abuse, Acts of God, lack of surveillance of automatic recording systems, negligence, mis-application, faulty installation, improper or unauthorized maintenance, installation or use in violation of product manuals, instructions, or warnings. Under no circumstance shall Gasboy be liable for any indirect, special, or consequential damages, losses, or expenses to include, but not limited to, loss of product, loss of profits, litigation fees, or the use, or inability to use, our product for any for any purpose whatsoever.

Parts Only - During the warranty period, Gasboy will, at its option, repair or replace defective parts returned transportation prepaid to its factory.

On-Site Labor Included - Gasboy will also provide, within the Continental United States and during the warranty period, the services of an Authorized Service Representative (ASR) for on-site repair or replacement of defective parts.

Replacement Parts - Any system components that are not part of the original system order, including Island Card Readers, Pump Control Units, etc., are considered replacement parts.

Equipment	Term	Coverage
Commercial Pumps and Dispensers Full-Cabinet Consumer Pumps	One year from date of installation or 18 mos. from date of Gasboy International's invoice to the purchaser, whichever comes first.	Parts and Labor.
Small Transfer Pumps, Meters, Pressure Regulators	One year from date of installation or 18 mos. from date of Gasboy International's invoice to the purchaser, whichever comes first.- Excepting the Model 2020 Hand Pump, which has a 90-day warranty from date of GASBOY International's invoice.	Parts Only.
Keytrol	One year from date of installation or 18 mos. from date of Gasboy International's invoice to the purchaser, whichever comes first.	Parts and Labor.
Fuel Management Systems: - CFN/ Profit Point - Series 1000/Fleetkey - TopKAT - Fuel Point Readers (sold with new systems)	One year from date of start-up or 15 mos. from date of Gasboy International's invoice to the purchaser, whichever comes first.- The basic warranty only applies to systems which have been started up by a Gasboy Authorized Service Representative (ASR).	Parts and Labor.
Additional Fuel Point Items: - Fuel Point Readers sold for retrofitting existing systems. - Fuel Point vehicle and dispenser components.	One year from date of start-up or 15 mos. from date of Gasboy International's invoice to the purchaser, whichever comes first.	Parts Only.
Encoders, Embossers, Modems, CRTs, and Logger Printers	Purchased with Fuel Management System (Encoders, Embossers only): 90 days from the date of start-up by a Gasboy ASR, or 180 days from date of Gasboy International's invoice, whichever occurs first. Purchased with Fuel Management System (Modems, CRTs, and Logger Printers only): Matches system warranty. Purchased Separately: 90 days from date of Gasboy International's invoice to the purchaser.	Purchased with System (Encoders, Embossers only): Parts only. Purchased with System (Modems, CRTs, Logger Printers only): Matches system warranty. Purchased Separately: Parts Only.
Air Diaphragm Pumps	Three years from date of purchase (for full warranty description, see Price List).	Parts Only.
Items not manufactured by Gasboy (ex. automatic nozzles, hoses, swivels, etc.)	Not warranted by Gasboy International (consult original manufacturer's warranty).	Not Applicable.
Replacement Parts	One year from date of Gasboy International's invoice to the purchaser.	Parts Only.

To the extent permitted by law, this warranty is made in lieu of all other warranties, expressed or implied, including warranties of freedom from patent infringement, or merchantability, or fitness for a particular purpose, or arising from a course of dealing or usage of trade. No one is authorized to vary the terms of the warranty nor may anyone make any warranty of representation, or assume any liability other than that herein stated, in connection with the sale described herein. The acceptance of any order by Gasboy International is expressly made subject to the purchaser's agreement to these conditions.



GASBOY INTERNATIONAL LLC

P.O. Box 309, Lansdale, PA 19446 ● (800) 444-5579 ● FAX: (800) 444-5569 ● www.gasboy.com