

# Direct Access Installation Read Me File

---

Please Read This File Before Installing Direct Access Software.

These Instructions are compatible with Direct Access Software, Version XXX



---

# Table of Contents

---

Introduction.....	3
Installing Direct Access.....	3
Startup Manager (SM).....	9
Launching Startup Manager.....	9
Define Machine.....	10
Connect to a Machine.....	11
Remove Machine.....	11
Removing TLS450 Direct Access Software.....	12

---

# Downloading and Installing Direct Access Files

---

## Introduction

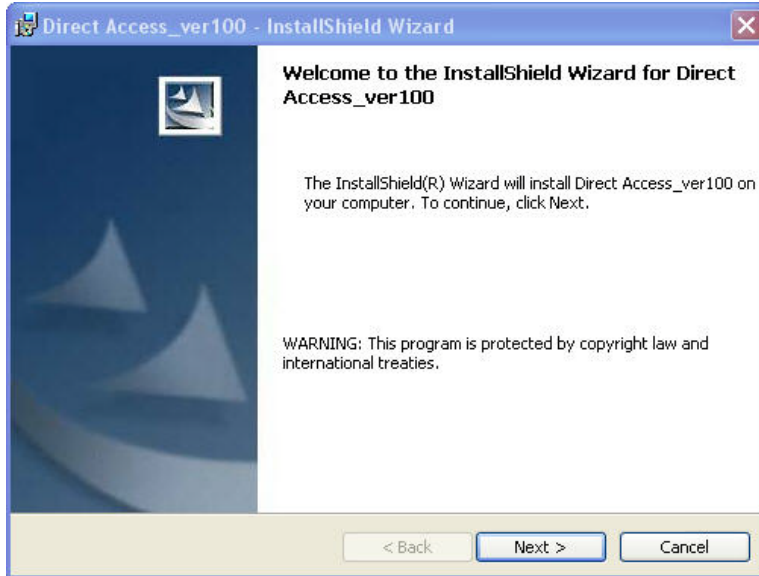
There are three applications to be installed for Direct Access:

1. **IntallShield:** An application used to install Direct Access files on your computer. When the InstallShield procedure runs, the files are unpacked and deposited in the correct directory. The InstallShield application also updates the registry and notifies you of the location of the new files.
2. **TLS450 Direct Access:** The TLS450 Direct Access application lets you access and control, from a remote site, the same functionality that is available at the connected TLS450 console's screen.
3. **Startup Manager (SM):** This is the program you will actually use to manage the connection to your TLS-450 console(s).

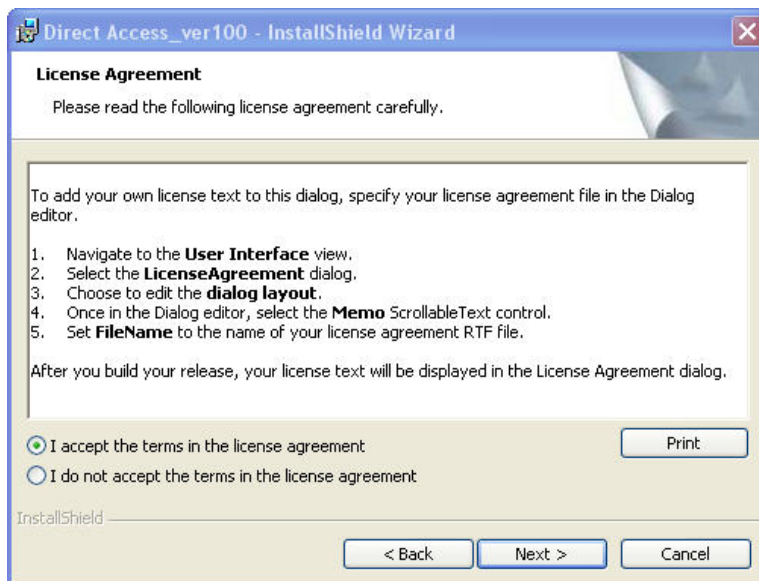
## Installing Direct Access

Download the Direct Access applications from the Veeder-Root web page ([://www.veeder.com/page/direct\\_access\\_software](http://www.veeder.com/page/direct_access_software)).

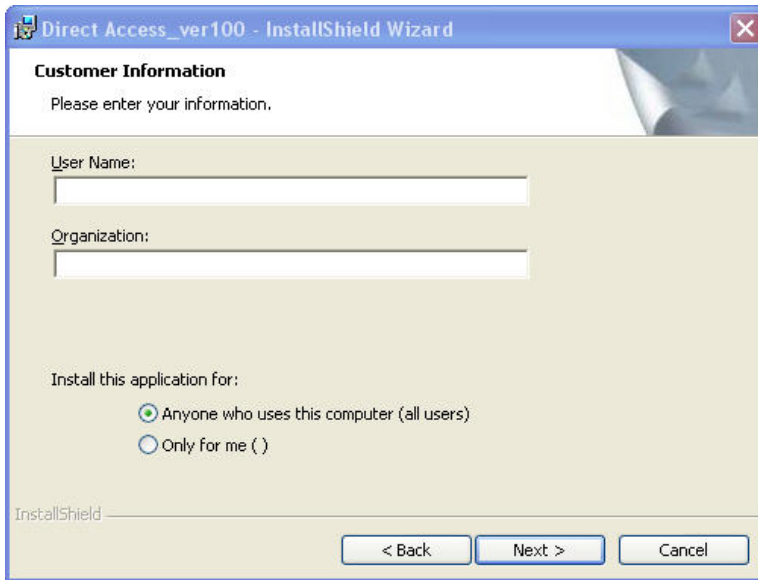
Double click the 'Setup.exe' file to begin the Direct Access installation and the Welcome dialog displays:



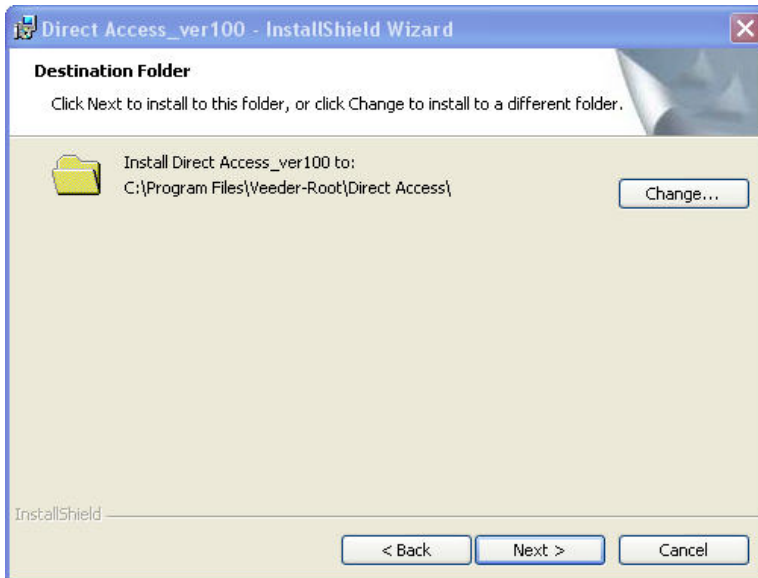
Click 'Next' to continue.



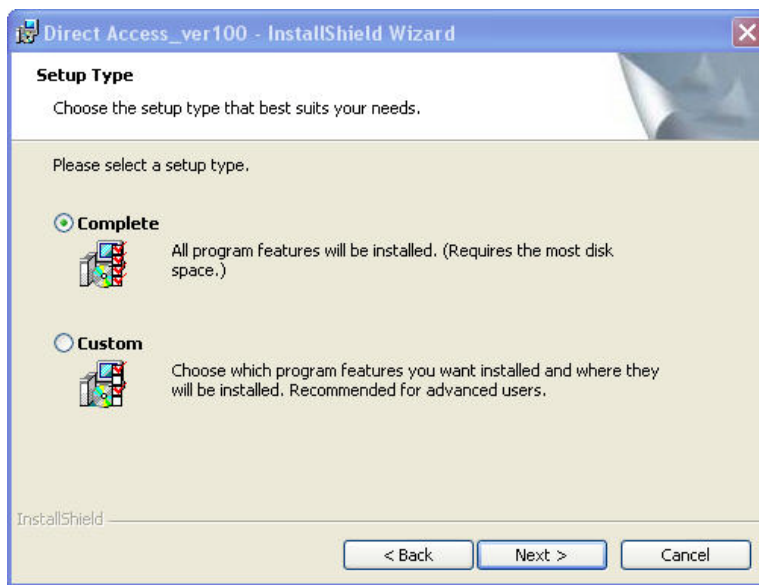
Read and accept the check the 'I accept ... ' radio button and click 'Next'.



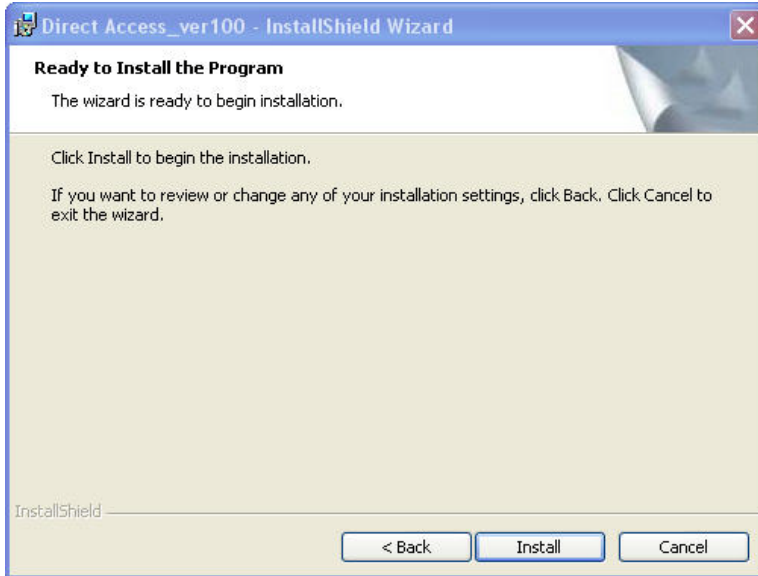
Enter user name and organization and select from one of the two 'Install this application for' radio button choices below and click 'Next'.



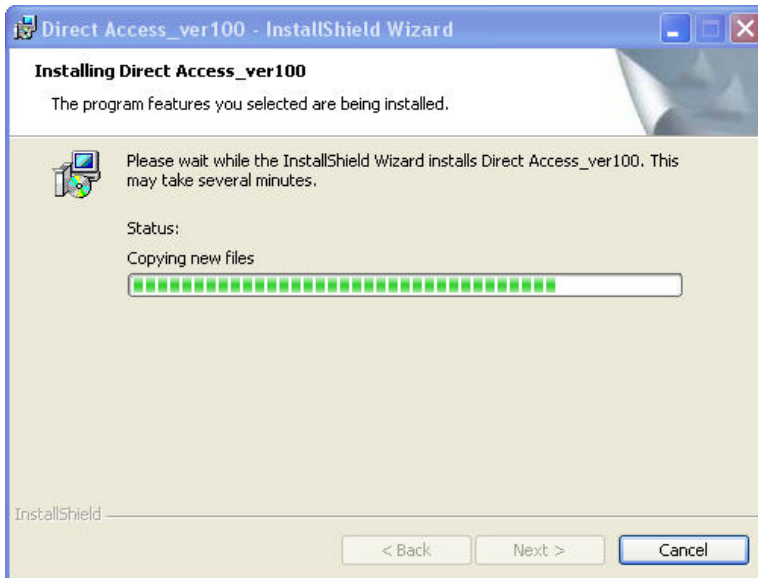
Accept the Direct Access file locations or click 'Change' to select another. Click 'Next'.



Click the 'Complete' radio button and click 'Next'.

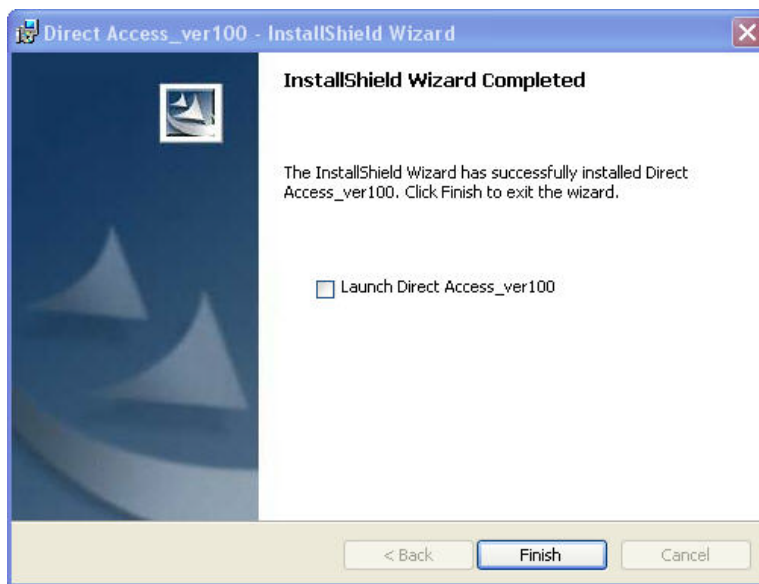


Click 'Install'.

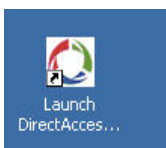


An install progress dialog displays. Click 'Cancel' to abort the install or just wait until the installation is complete.

Should the same version of Direct Access be already installed on your computer, you should click 'Cancel' to abort the installation if a verification dialog error appears.



You can click the 'Launch Direct Access\_ver100' check box that will start Direct Access when you click the 'Finish' button, or you can just click 'Finish'. The program is now installed and a Launch Direct Access icon should reside on your desktop. Double click this icon to launch the Direct Access Startup Manager.



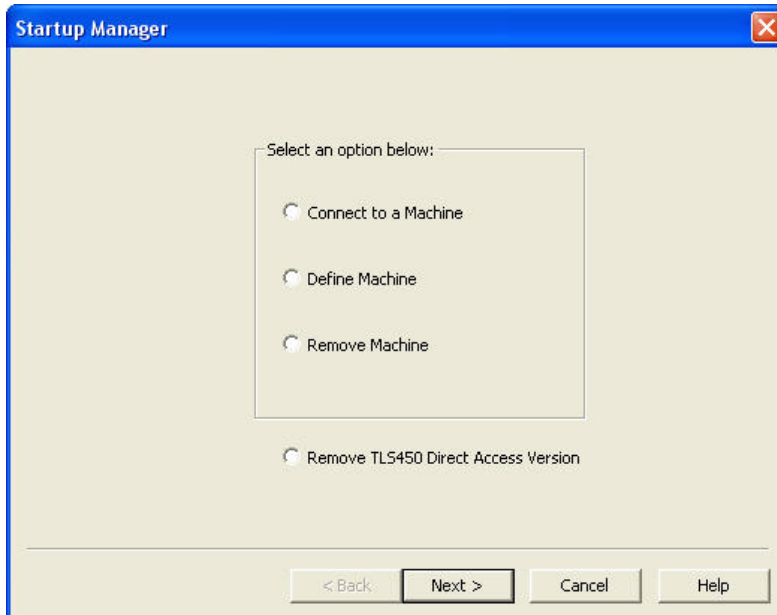
## Launching Direct Access

### Startup Manager (SM)

The Startup Manager (SM) program is used to manage your TLS-450 console(s) accessibility by letting you add or remove them from your Direct Access connection list, manage your Direct Access software version(s) and connect to TLS-450 consoles in your Direct Access connection list.

### Launching Startup Manager

Double click the Launch Direct Access icon on your desktop and the Startup Manager dialog appears:



Note: The term Machine in Startup Manager dialogs refers to a TLS-450 console:

1. Connect to a Machine: Click this radio button , then click 'Next' to connect to a selected TLS-450 console (one that has been previously defined).
2. Define Machine: Click this radio button , then click 'Next' to define (add) a new (previously undefined) TLS-450 console to your connection list.

3. Remove Machine: Click this radio button , then click 'Next' to remove a TLS-450 console from the defined machine (connection) list.
4. Remove TLS450 Direct Access Version: Click this radio button , then click 'Next' to remove an older version of the TLS450 Direct Access software from your computer. If the TLS-450 consoles in your Direct Access connection list have different software versions , you will need to have compatible versions of Direct Access software installed. At some point in the future, however, none of the TLS-450 consoles in your connection list may require older versions of Direct Access. This selection lets you remove earlier Direct Access software version(s) that you no longer need.

### Define Machine

When Direct Access is first installed and when adding new TLS-450s to your connection list, you must define each TLS-450 using the Define Machine selection.

Click the 'Define Machine' radio button and click 'Next' on the Startup Manager dialog box to open the Define Machine dialog box

Click in the Machine Name field and type in the name this machine, e.g, 450.

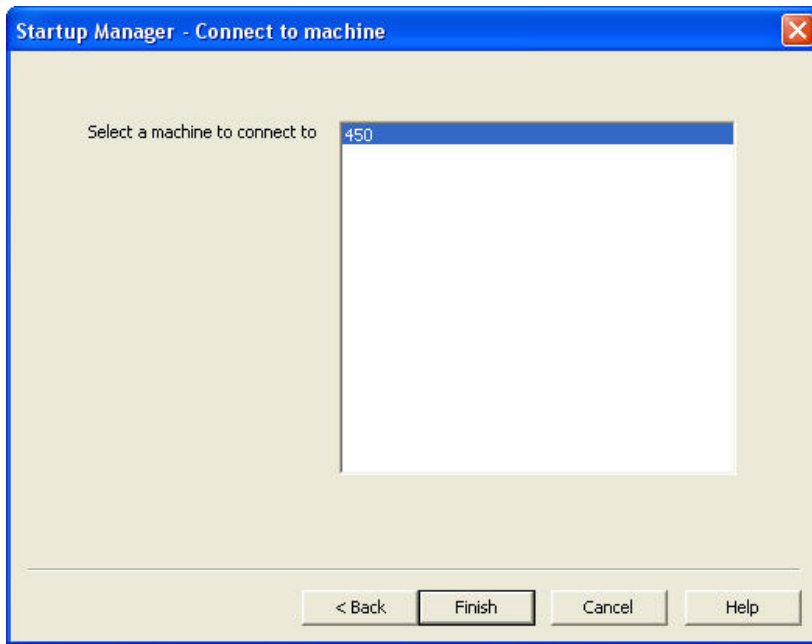
Click in the IP Address field and enter the IP address of this TLS-450 console, OR in the Host Name field, enter your qualified machine name (e.g., [domain@companyx.com](mailto:domain@companyx.com)).

Click 'Finish' to add the new TLS-450 console to your connection list.

Field Code Changed

### Connect to a Machine

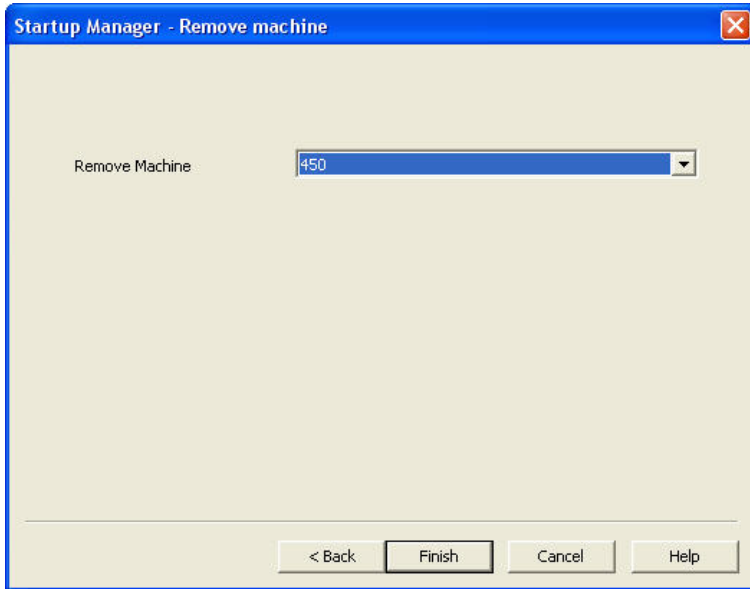
Click the 'Connect to a Machine' radio button and click 'Next' on the Startup Manager dialog box to open the Connect to Machine dialog box.



Highlight the TLS-450 to which you want to connect in the list and click the 'Finish' button to connect to the selected TLS-450 console.

### Remove Machine

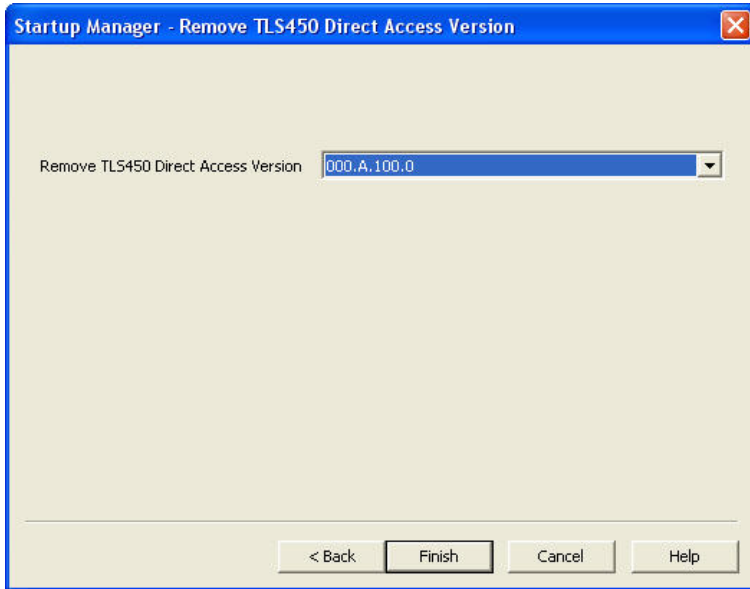
Click the 'Remove Machine' radio button and click 'Next' on the Startup Manager dialog box to open the Remove Machine dialog box.



Click the arrow to the right of the dropdown box in the Remove Machine field and highlight the TLS-450 console you want to remove from your connection list, then click 'Finish'. The selected TLS-450 will be removed from your connection list (the defined machines list).

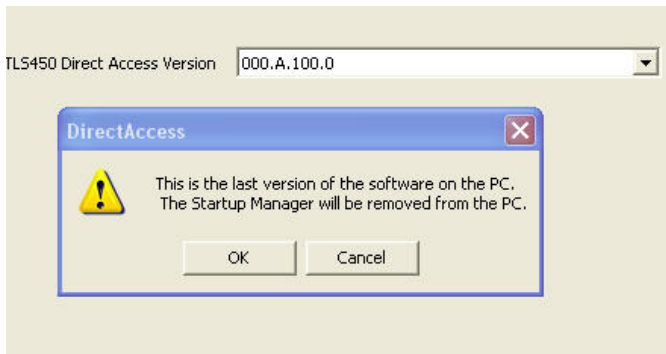
### Removing TLS450 Direct Access Software

Click the 'Remove TLS450 Direct Access Version: ' radio button , then click 'Next':



Click the arrow to the right of the dropdown box in the Remove TLS450 Direct Access Version field. Highlight the version you want to remove from your connection list, then click 'Finish' to remove this Direct Access software version from your computer.

If this is the only version of Direct Access software on your computer, you will be warned that this action will delete Direct Access software from your computer:



If desired, click 'OK' to remove the only version of Direct Access from your computer or click 'Cancel' to abort the removal operation.