

# SK700-II ADBLUE®

## ADBLUE® DISPENSERS ADAPTED TO FIT YOUR NEEDS

- > Standalone, Combi or Integrated
- > Ensures maximum uptime and damage free filling
- > A reliable solution to meet any customer needs
- > Also available in ATEX version



Keeping the World Moving



 **GILBARCO  
VEEDER-ROOT**

# Why SK700-II AdBlue®?

Tighter European emission limits for vehicles have strongly increased the demand for AdBlue® filling stations. However, AdBlue® can literally destroy filling equipment, as it is highly corrosive, temperature sensitive and crystallises in contact with air. Minor impurities can easily damage the expensive truck catalytic system.

The modular SK700-II AdBlue® range, now available in ATEX, is uniquely designed and field proven to meet the rigorous demands of AdBlue® filling. It will fit seamlessly with the rest of the solutions and systems on your forecourt.



## Advanced Design

The SK700-II AdBlue® range incorporates an electromagnetic flow meter, a high advanced and corrosion proof measurement system.

The field proven SK700-II ensures maximum uptime and the flow meter, without any moving parts, has no drift reducing the total cost of ownership.

## Flexible Solution for different conditions

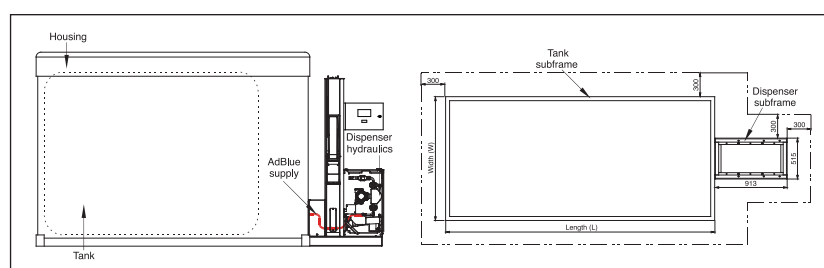
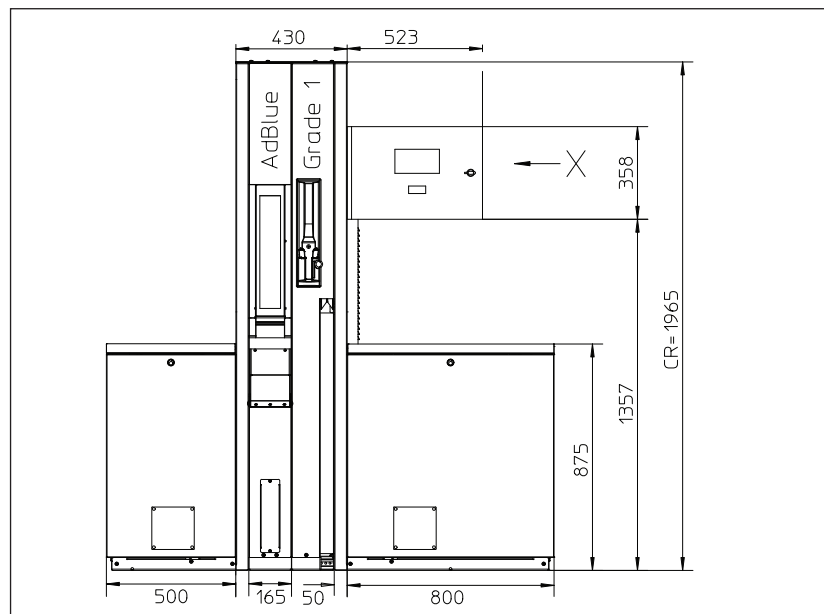
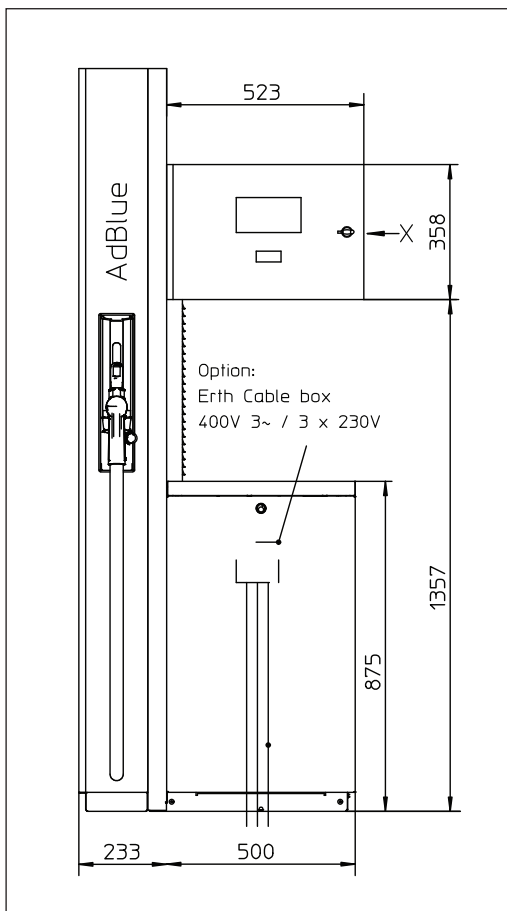
Gilbarco Veeder-Root has developed a heated hose system that prevents AdBlue® from freezing and makes nozzle and hose handling very easy.

In addition, the new ATEX version allows you to combine AdBlue® with Petrol and Diesel grades in the same unit allowing greater flexibility.

# Technical Specifications

## Technical Specifications & Standard Features

Hydraulics	Electromagnetic Flow meter AdBlue®   Stainless steel internal piping and connections   Non return valve and filter   AdBlue® delivery – Pressure   Flowrate from 2L-40L /min for cars and truckst   Power supply: 230V (+10% -15%), 50Hz ± 2Hz	
Electronics	Gilbarco Calculator   LCD display (backlit)   Interface: 2-wire, IFSF-LON, ATCL, PUMA LAN	
Mechanical	<b>Electronics</b> – Stainless steel valves   <b>Housing</b> – Powder coated steel   <b>Hose</b> – 3.3m, black   <b>Hose management</b> – Internal hose with retraction as standard   <b>Nozzles</b> – ZVA	
Options	Elaflex swivel   Electromechanical totalisers   Nozzle adaptor   AdBlue® preset   AdBlue® specific hose   Stainless steel hose column   Stainless steel installation kit   Stainless steel hydraulic top cover   Enhanced corrosion protection   SK700-II standard options	
Versions	Base (not heated)	Heated
Hydraulic cabinet heater	Not included	Included
Hose column heater	Not included	Hose with trace heater
Power consumption heating	-	700 watts
Min. operating temperature	Down to -10°C	down to -25°C (optional down to -40°C)
AdBlue breakaway	Optional	Available up to -25°C
Nozzle cover	Optional	Optional
Certifications	MID & Atex (Optional)	MID & Atex (Optional)



# Why Gilbarco Veeder-Root?

Thanks to Gilbarco Veeder-Root's SK700-II range for Alternative Fuels LPG, AdBlue<sup>®</sup>, CNG, Biodiesel and E85 are now easy to integrate into your forecourt.

With these configurations it is now possible to deliver Alternative Fuels alongside other fuel grades from the same dispenser. The SK700-II range for Alternative Fuels allows you to maintain a uniform image across your alternative and conventional fuel dispensers. The safety, efficiency and reliability offered by Gilbarco Veeder-Root's robust, low maintenance solutions will continue to keep your site up and running.

## The Fail Safe AdBlue<sup>®</sup> Filling Solution

### Fail Safe

The pressure delivery system avoids crystallisation and dispenser hydraulics are corrosion proof, while automatic heating prevents AdBlue<sup>®</sup> from freezing.

### Versatile

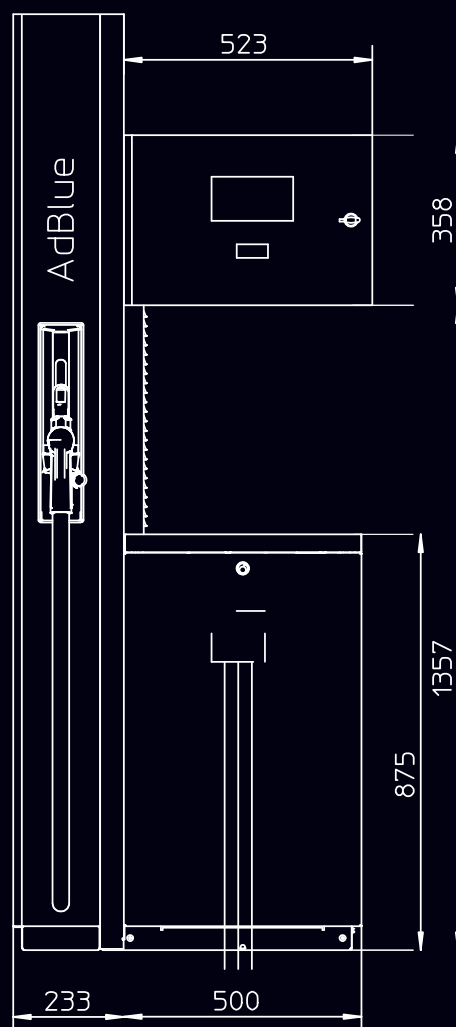
Choose from Standalone, Combi and Integrated configurations to build the right solution for your forecourt.

### Design Matters

The SK700-II AdBlue<sup>®</sup> incorporates a highly advanced metering system – an electromagnetic flow meter. It has no moving parts to ensure it will not block, maximising uptime.

### Proven

AdBlue<sup>®</sup> freezes at -11°C. SK700-II AdBlue<sup>®</sup> installations have continuously performed in Finland at temperatures down to -40°C.



# AdBlue® Dispensing Solutions

The new Frontier AdBlue® Dispensers for cars and trucks, with ATEX and MID approvals. An addition to our flagship SK700-II platforms.

- > Available for either cars or trucks, or both
- > Can be standalone AdBlue® Dispenser or Combi dispenser with Diesel or Integrated with above ground tank: 1,100; 4,000; 5,000; 7,500 or 10,000 litre
- > Models from 1-hose/1-grade to 4-hose/2-grade with up to 4 displays
- > Electromagnetic flow meter with no moving parts and no drift
- > Available with ATEX and MID approvals

Our comprehensive range of AdBlue® dispensers for cars and trucks demonstrates Gilbarco Veeder-Root's commitment to introducing environmentally friendly products at the forecourt.



**SK700-II AdBlue®**  
**Standalone for cars and trucks**  
Compact and robust



**SK700-II AdBlue®**  
**for cars and trucks**  
For expanding forecourt needs  
Flexible and Modular  
Multi-grade dispensing solution



**SK700-II AdBlue®**  
**Integrated**  
Plug and play

# Gilbarco Veeder-Root Solutions

With a universal range, global reach, deep-rooted expertise and superior customer service, Gilbarco Veeder-Root is committed to building better business for its customers.

## Pumps & Dispensers

**Robust, reliable, accurate and secure technology**

Our Pumps and Dispensers feature flexible, innovative and upgradable technology. They not only grow with your business, but also improve the forecourt experience for your end-users.

By focusing on the unique requirements of our customers, we deliver high quality and reliable solutions that are designed to support better business now and in the future.

Our range includes:

- > Multi-Product Dispensers
- > Single and Dual Dispensers
- > Alternative Fuels
- > Applause Europe (multimedia)
- > Submersible Turbine Pumps
- > Commercial Dispensers



## Business Support

**Protect assets and drive operational efficiency**

Our Business Support solutions minimise downtime and disruption by providing the tools, services and technology necessary for our customers to get more from their businesses.

With an extensive reach throughout Europe, you can be assured that no matter where your business takes you, our comprehensive range of services will always be available.

## Wetstock Management

**Improve performance, uptime and security**

Our comprehensive range of compliant and reliable Wetstock Management solutions offer you advanced engineering and a responsive service. Scalable and customisable, our tools provide control, security and data across networks of all sizes anywhere in the world.

Ultimately, our solutions enable you to stay compliant and in control.

## Retail Solutions

**Maximise profitability and minimise overheads**

Our leading Point of Sale, Head and Back Office Systems and forecourt controllers create new business at the pump and enable deeper insights into stock, logistics and security.

Working alongside our wide range of products and services, our Retail Solutions are designed to work for you.

AdBlue® is a registered trademark of Verband Der Automobilindustrie (VDA).

Keeping the World Moving

Tel: +44 (0) 1268 533090  
E-mail: [eusales@gilbarco.eu](mailto:eusales@gilbarco.eu)  
Visit us: [www.gilbarco.eu](http://www.gilbarco.eu)

 **GILBARCO  
VEEDER-ROOT**