

# Horizon-II

- ✓ Best-in-class Security
- ✓ Unparalleled Versatility
- ✓ Industry Leading Accuracy
- ✓ Unbeatable User Experience

Fuel dispensing solutions



**GILBARCO  
VEEDER-ROOT**

## Technologically advanced with state-of-the-art electronics

The Horizon-II is designed to give your forecourt the edge with unrivalled security, industry leading accuracy, and a supreme end-user experience when limited space availability is a challenge.

The most comprehensive and versatile H-frame dispenser available, the Horizon-II is the culmination of the quality and expertise that have become our trademarks.



## Best in-class Security

The Horizon-II has all the security you need. Providing you with total peace of mind that comes from knowing your assets are safe against tampering and fraud.

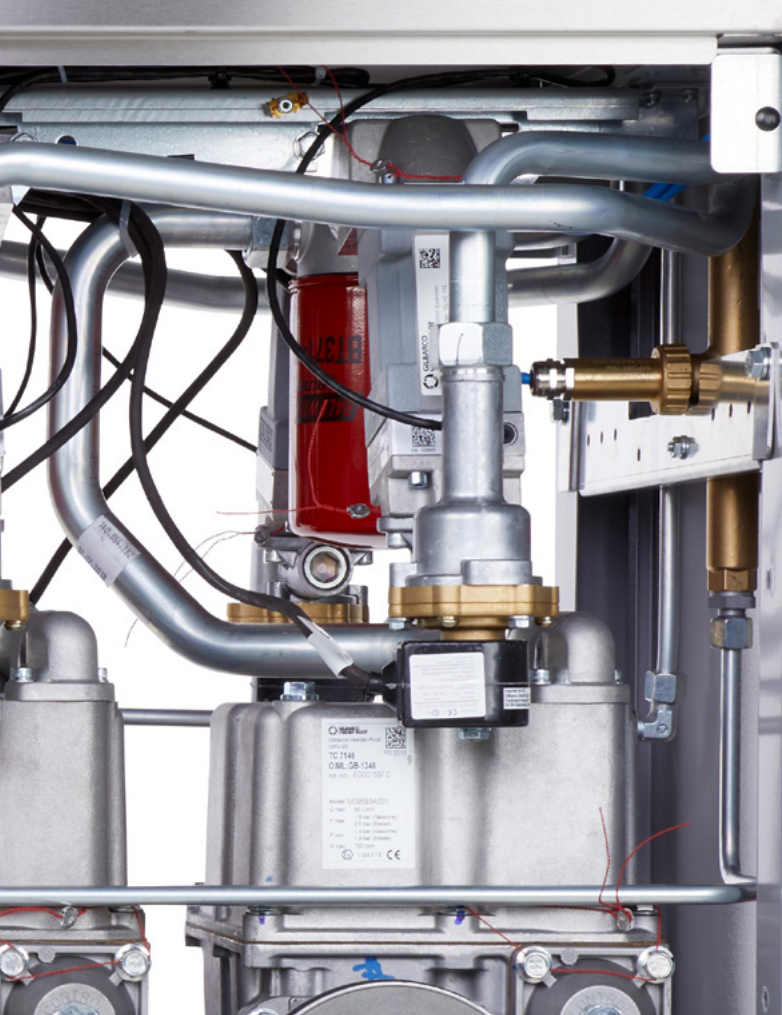
- Secure Interface Pulser
- Password protected electronics
- Sensor fitted doors
- Fraud protective software

## Unparalleled Versatility

Modern fuel technology demands flexible dispensing solutions. The Horizon-II comes in the widest range of single cabinet configurations of any dispenser available.

- Integrate up to four standard grades
- UHF applications and Alternative Fuels combinations possible
- Customisable housing to suit your forecourt
- Multi-Media and CRIND options available





## Industry Leading Accuracy

More accuracy for increased profit

- Best-in-class electronic metering devices for the lowest meter drift
- More precision reduces the need for recalibration
- Segmented networks
- Customisable user access

## Unbeatable User Experience

In a world of choice and strong competition, your customers' experience matters. With the definitive end-user experience of the Horizon-II, your forecourt can have visible advantages over the competition.

- Enhanced LCD displays for improved visibility
- Longer reaching hose for maximum ease of use
- Multimedia ready for a more engaging user experience

# Features



### Secure Interface Pulser (SIP)

An industry first, a tamperproof innovation; the Secure Interface Pulser incorporates chip identification with supporting electronics, end-to-end encryption and lift-off detection.



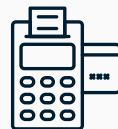
### Password protected electronics

Increase your control and allow users specific and relevant access. Secure entry through state-of-the-art electronics means the Horizon-II can provide four levels of access so you can easily manage who controls what. A hardwired keypad provides the additional security of stable secure access.



### Versatile, comprehensive dispensing

Maximise your forecourt space and dispense up to 4 conventional / biofuels from a single unit.



### Flexible card reader options

Incorporate Gilbarco Veeder-Root FlexPay™ CRINDs (Card Reader in Dispenser) or third party payment options for an all-in-one integrated solution through factory fitting, retrofit or onsite upgrade.



### Attractive and solid housing

Customise the appearance of the Horizon-II to suit your forecourt with optional stainless steel housing hydraulics panels, hydraulics cover, plus optional brand canopy for a completely customisable finish.



### Uncomplicated servicing & maintenance

"One Measure" electronic calibration means quick diagnosis and servicing for reduced forecourt downtime

The Horizon-II technology enjoys a worldwide presence, so you can be confident about serviceability and availability of parts, no matter where you are.

# Technical Specifications

The Horizon-II is built with the highest-quality components, available with some optional extras.

## Hydraulics

Pumping Unit

High performance GPU pumping unit

Motor

400 V / 3 phase motors

Meter

Gilbarco Veeder-Root four piston C+ meter  
(Optional HD Meter/Ecometer)

## Electronics

Calculator

Gilbarco Veeder-Root Apollo electronics

Display

LCD backlit

Interfaces

IFSF-LON/2-Wire/ATCL/Pumalan // Option: Nuovo  
Pignone/ ER3

## Mechanical

Hose Column

Powder coated steel

Valves

Electronic proportional valves

Hydraulics Cabinet Door

Doors of hydraulic compartment - Powder coated steel

Calculator Head

Powder coated steel

Nozzles

ZVA with Anti Kink Sleeves for hoses | 21 mm spouts for petrol (with or without vapor recovery), 25 mm for diesel, 31 mm for Diesel UHF

Hose

Elaflex

Hose Management

External hose (hose retraction optional)

## Characteristics & Performance

Temperature Range

-20°C to +55°C (-40°C optional)

Dispenser Flow Rates

40, 40/70, 70 or 120 l/min

Power Supply

230V 1-phase or 400V 3-phase (+10%, -15%), 50 Hz



## Applause Europe

### Multimedia Dispenser Screen

The fully integrated multimedia screen. For a rich refuelling experience.

- ✓ **Integrated screen**  
Combine transaction and media content into a single screen for an enhanced end-user experience.
- ✓ **Increase your revenue**  
Promote high margin products at the pump or sell advertising space to third parties.
- ✓ **Enhance your profile**  
Distinguish your offering by using rich content to communicate with an engaged audience.

**Find out more** - email [euenquiries@gilbarco.com](mailto:euenquiries@gilbarco.com) or visit [www.gilbarco.com/eu](http://www.gilbarco.com/eu)

# Fuelling the future, today.

Our experience and expertise in the fuelling industry means we understand a forecourt's business and consumer needs better than anybody. Gilbarco Veeder-Root stands for quality, innovation and seamless integration.

To find out more about how you could grow your business with our industry leading dispensing solutions, speak to your relationship manager or visit [www.gilbarco.com/eu](http://www.gilbarco.com/eu)

Email: [euenquiries@gilbarco.com](mailto:euenquiries@gilbarco.com)



**GILBARCO  
VEEDER-ROOT**

