

VISY-Command Web

The control unit with integrated SECON-X functionality for worldwide access to your data



VISY-Command Web

Full transparency

The VISY-Command Web is a universal measurement evaluation unit for petrol stations with optional remote access via Internet interface. With internet-capable devices such as smartphones or tablets, real-time data is available at any time.

Intuitive user interface

The graphic user interface of the VISY-Command Web displays the measured values of the petrol stations clearly.

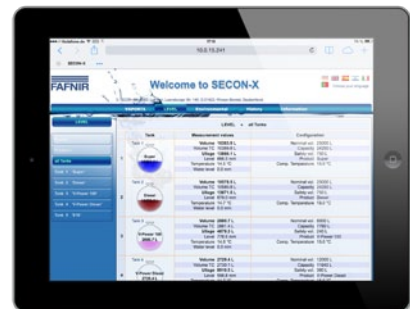
Internet interface

The remote access to data is established via encrypted and secure internet connection.

Any time and anywhere

In conjunction with the integrated SECON-Lev software, VISY-Command Web provides visual data management for tank and environmental data recording.

SECON-Lev displays tank levels and alarms graphically. Wet stocks, deliveries and leakages can be viewed both locally and via secure VPN access at any time.



FEATURES AND BENEFITS

Access; any time, anywhere

- Worldwide access to real-time data
- Multi-lingual graphic user interface
- Universal data format (XML) for processing on all current operating and ERP systems

Diagnostic

- All diagnostic functions of a modern automatic level gauge system, remote and local
- Avoiding down times thanks to automatic alarm notifications
- Remote diagnostics to optimise service operations; service and maintenance planning through data analysis possible

Security

- The latest in security technology for your data
- Security assured by company-specific access rights
- Secure VPN network connection to the SECON server

Memory

- Local and global data storage
- Minimum of 10 years data protection



**Worldwide access to
real-time data**



Control

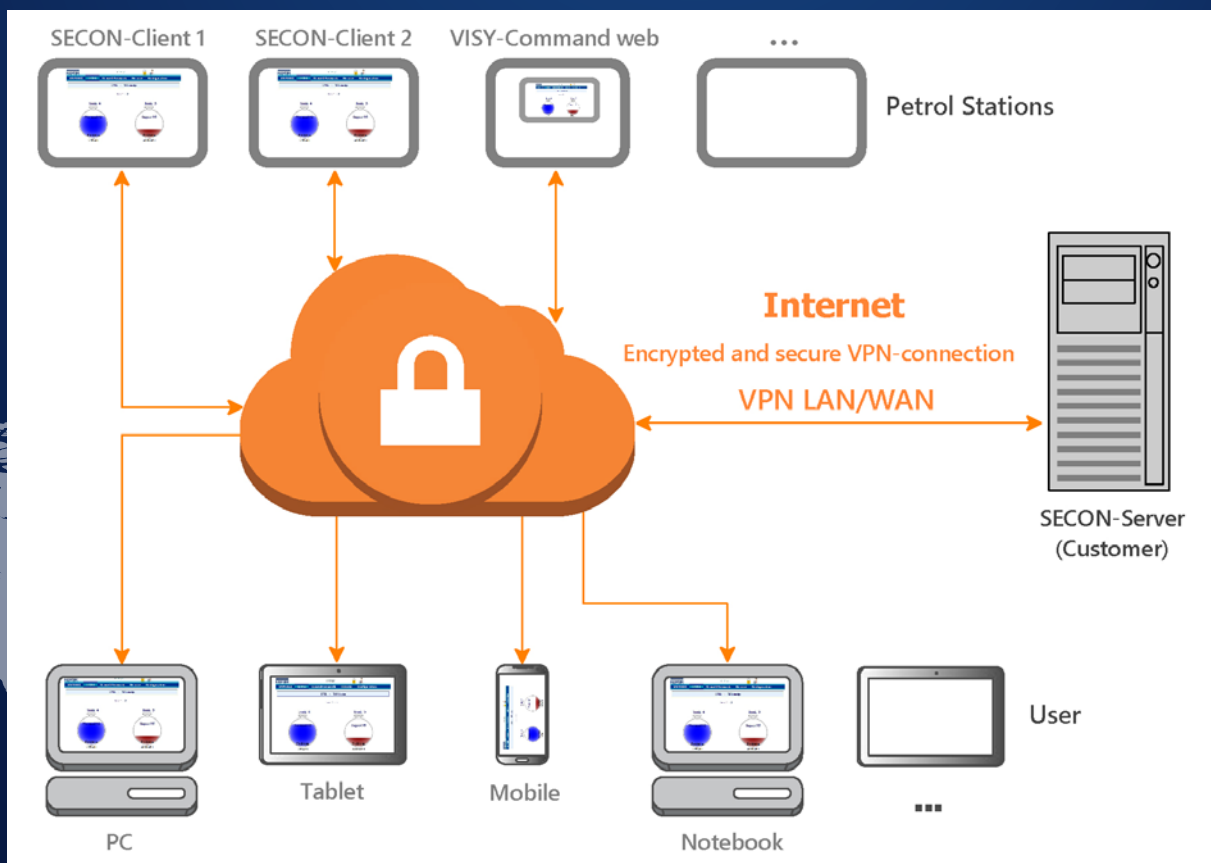
Remote access and remote monitoring of your entire site network using PC, tablet or smart phone.

ERP Systems

SECON-X ensures a standard data content (XML file) to integrate into your own ERP / enterprise infrastructure.

Individual access rights

Access rights specific to users and needed information can be assigned via a secure VPN network.

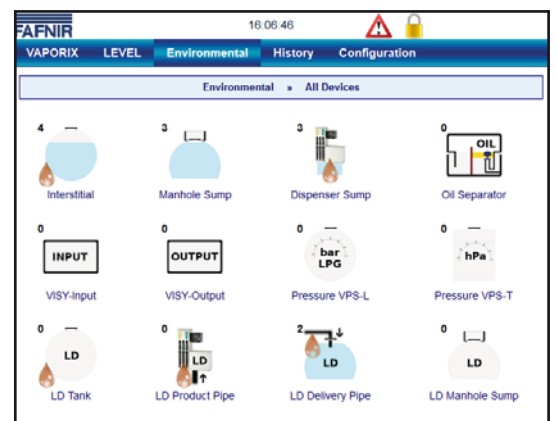
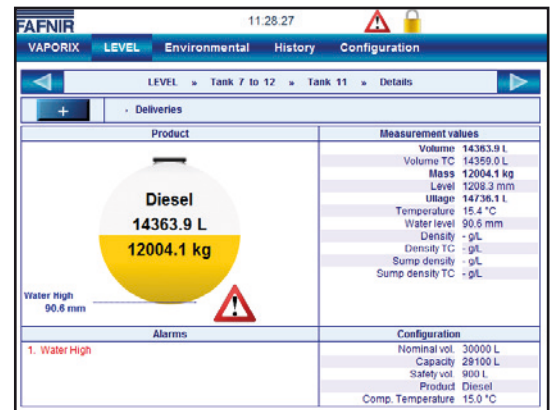


SEE MORE



VISY-Command Web

VERSION	VISY-Command Web 2/4/8/16 or RF
SIZE	300 x 300 x 175 W/H/D [mm] (Version 2/4/8/RF) 300 x 400 x 175 W/H/D [mm] (Version 16)
CONNECTION	Depending on the version for 2/4/8 or 16 tanks and environmental sensors
INDEX OF PROTECTION	IP20
WEIGHT	5.7 kg (Version 2/4/8/RF) 9.7 kg (Version 16)
AMBIENT TEMPERATURE	0 °C to 40 °C
POWER	230 VAC ±10 %, approx. 15 VA (Version 2/4/8/RF) or 23 VA (version 16)
DISPLAY	5.7" TFT VGA display with LED backlight and touch screen, multi-lingual user interface (en, de, it, es, pt, ru, cn)
VISUALISATION	Graphic and tabular display, local and remote
MEASUREMENT VALUES	Diagnostics and data management Variable number of displayed tanks (max. 16) Real-time measurement of tank probes and environmental sensors: product level, product volume, ullage, product density, leakage, water level, pressure, product temperature, temperature-compensated volume, delivery
ALARMS	Signalling (acknowledgeable) by built-in speakers and by email (server-side configurable)
SERVER	Integrated web server, SQL database server
SECURE DATA TRANSFER	Remote access via internet tunnel, 1024-bit VPN encryption, individual and group access control
MEMORY	Removable memory SD/SDHC, 10 years of data storage, data backup in standard data format (XML)
INTERFACE	1 x RS-485/232 for POS, 1 x RS-232 for configuration, 1 x RS-485 for Truck Driver Display, 1 x USB2.0, 1 x Ethernet



FAFNIR GmbH
 Schnackenburgallee 149 c
 22525 Hamburg, Germany
 Phone: +49/40/39 82 07-0
 Fax: +49/40/390 63 39
 E-Mail: info@fafnir.com
 Internet: www.fafnir.com

VISY-View Touch

Visualization for the Automatic Tank Gauging System VISY-X



VISY-View Touch

- Instant alarm message via e-mail
- Daily report via e-mail
- Static leak detection

Application

VISY-View Touch is a display for use with the tank gauging system VISY-X. It is a visualisation and working platform for tank contents at petrol stations and provides a convenient overview

of the installed level and environmental sensors. The VISY-View Touch display module is used wherever no petrol station cash system is available, cannot or should not be used for view-

ing tank content data. In addition, it is particularly useful to the fuel tanker driver, who will be able to read tank levels before refuelling the petrol station.

Features of the FAFNIR technology

- Permanent overview of tank contents at the petrol station
- User-friendly tank content viewer with a useful range of additional information
- Tank contents displayed in litres or gallons
- Display of product temperature and water level
- Communication with the VISY-Command control unit
- Optional printer connection
- Display of various historical data
- Free, user-friendly software for firmware updates
- Ability to connect multiple VISY-View displays if necessary
- Also usable as display for fuel tanker*

* with USB input module

Product Features

The tank content

visualization encloses:

- » Display of tank contents in litres
- » Product temperature
- » Temperature-compensated volume
- » Ullage
- » Tank and product name
- » Water level
- » Alarms for water and product
- » Delivery history for all tanks
- » Alarms for environmental sensors
- » Additional information with wireless version
- » Static leak detection

Technical data

VISY-View Touch

- » Housing dimensions: H 205 x W 230 x D 80 [mm]
- » Display: Embedded microcomputer with 5.7" colour touchscreen and VISY-SoftView application software
- » Plug-in power supply: 12 V_{DC}
- » Ambient temperature: 0 °C to +40 °C
- » 1 x RS485 communication interface with VISY-Command
- » 1 x RS232 communication interface e. g. with a printer
- » Casing protection: IP20

Package contents:

- » Display
- » Plug-in power supply

Accessories:

- » Thermal transfer printer
- » Table stand
- » USB input module



VISY-View
table stand

VISY-Command

The control unit



The control unit
VISY-Command

VISY-Command contains the intrinsically safe power supply for the VISY-Stick sensors and their

control unit. Various interfaces ensure that it always has access to the latest data.

Features of the FAFNIR technology

- Up to 3 different VISY sensors can be connected to one terminal by a common cable
- Highly flexible thanks to modular architecture
- Easy to upgrade and retrofit
- IFSF-LON compatible
- Easy to configure thanks to free VISY-Setup software application
- Easy start-up
- The current firmware will be provided free of charge throughout the entire product life cycle (on request).
- Communication via Ethernet possible
- Free, user-friendly software for firmware updates
- Wireless communication of VISY-Command RF with VISY-Stick Sensors

Function description

The VISY-Command control unit has a modular architecture. The internal components are modules for DIN rail installation that can be retrofitted or converted at any time. VISY-Command is available in the form of basic versions VISY-Command 8 and 16, i.e. with either 2/4/8 or 16 sensor connections. Up to 3 different sensors (e.g. VISY-Stick, VISY-Stick Interstitial and VISY-Stick Sump) can be connected to one terminal by a common cable.

The control unit is also available in the form of VISY-Command RF; this supports the wireless operation of up to 16 VISY-Stick sensors.

VISY-Command provides an intrinsically safe power supply for the VISY-Stick sensors. The measured values supplied are prepared in such a way that all of the latest measurement data can be viewed at any time on a superordinate system (e.g. cash system, petrol station controller, VISY-Monitor PC software...) connected to a serial port. Data transmission is supported by various, common data protocols, e.g. Ethernet and IFSF-LON.

The extension interface of VISY-Command enables multiple external VISY-View Touch displays (e.g. fuel tanker display and local display in the office) to be connected and positioned where they can be seen and operated by personnel at all times. VISY-Command itself can be fitted in a location that achieves the most cost-effective cabling arrangement (e.g. power distribution unit or basement). By contrast with systems having an integrated display, the major advantage of our system is that it is not necessary to have all of the sensor cabling routed through the building to the viewing point (e.g. the office).

The optional VISY-ICI 485 interface makes it possible to connect multiple VISY-Input/Output units. These enable the inputting (VISY-Input) of additional external alarms (e.g. oil separators) and/or the outputting (VISY-Output) of alarms by way of relay contacts.

VISY-Command is configured using the VISY-Setup software application through the separate serial service port. As a result, practically all maintenance and diagnostics tasks can be carried out while the entire system is still in operation. It is not necessary to switch off individual components: petrol station operations are not affected. VISY-Setup is free of charge and, in addition to offering user-friendly and efficient direct configuration by notebook, it also supports remote servicing via a modem or serial-to-Ethernet converter.

Design

VISY-Command		
Housing	up to 8 sensor terminals and RF version: H 300 x W 300 x D 125 [mm]	16 sensor terminals: H 300 x W 400 x D 175 [mm]
Casing protection	IP20	
Weight	5.7 kg	9.7 kg
Ambient temperature	0 °C to +40 °C	
Supply	230 V _{AC} ± 10 %, approx. 15 VA or 23 VA (VISY-Command 16)	
Internal display	7-segment status indicator	
Number of sensor terminals	2, 4 or 8	16
Host interface (RS232 / RS485) – IFSF-LON module – Ethernet module (MoxaNPort5110) for long distance scanning – Modem for long distance scanning		standard optional ⁽¹⁾ optional ⁽¹⁾ optional ⁽¹⁾
Service interface (RS232) – Modem for long distance scanning – Ethernet module (MoxaNPort5110) for long distance scanning		standard optional ⁽¹⁾ optional ⁽¹⁾
Extension interface (RS485) – VISY-View Touch display		standard optional ⁽²⁾
VISY-ICI 485 module – VISY-Output (relay outputs) – VISY-Input (digital switch inputs)		optional optional ⁽²⁾ optional ⁽²⁾
Printer		optional ⁽³⁾ (external)*

* only in connection with VISY-View Touch

Functions

VISY-Command	
Communication with the PoS / BOS system or petrol station controller	standard
Automatic filler recognition	standard
Automatic tank calibration	optional ⁽⁴⁾
Loss / leak monitoring	standard ⁽⁵⁾
Stock, filling and alarm histories	standard ⁽⁵⁾

(1) Alternatively, one of the available options can be used at the interface concerned.

(2) Multiple available options can be used simultaneously at the interface concerned.
(3) In conjunction with VISY-View Touch.

(4) In conjunction with VISY-Monitor and a compatible cash system/ automatic fuel dispenser.

(5) In conjunction with VISY-Monitor.

VISY-Command GUI

The control unit with a graphic display



VISY-Command GUI with printer

- Instant alarm message via e-mail
- Daily report via e-mail
- Static leak detection

VISY-Command GUI contains the intrinsically safe power supply for the VISY-Stick sensors and their control unit. Various interfaces ensure that it always has access to the latest data. The integrated display unit with the 5.7" colour touch screen provides and dis-

plays the current measurement values and the reporting functions (log file) in a user-friendly form.

The VISY-Command GUI has a display with a clearly structured and easy to operate interface. The most important informa-

tion, e.g. tank level and alarms are displayed directly and up-to-date on the screen. Using the touch screen, operators can call up detailed information simply by touching the tank graphics or the function keys.

Features of the FAFNIR technology

- | | | |
|--|---|--|
| <ul style="list-style-type: none"> ■ Up to 3 different sensors can be connected to one terminal by a common cable. ■ Up-to date overview of the tank contents shown at a graphic display ■ Convenient tank content visualization with useful additional data, e.g. ullage | <ul style="list-style-type: none"> ■ Display of the tank contents in litres, with or without temperature compensation ■ Display of product temperature and water level ■ Highly flexible due to modular architecture ■ Easy to upgrade and retrofit ■ Precise configuration using the free software VISY-Setup | <ul style="list-style-type: none"> ■ Easy start-up ■ Communication via Ethernet possible ■ Free, user-friendly software for firmware updates ■ Integrated alarm signal ■ Wireless communication of VISY-Command GUI RF with VISY-Stick Sensors ■ Optional with printer |
|--|---|--|

Function

The display of the VISY-Command GUI visualises the data provided by the FAFNIR sensors. All of the relevant data related to the tank (tank number and product name), the product (level, water level and product temperature) and various additional data (e.g. ullage) are displayed. The tank information displayed is continuously refreshed and viewable at all times. Fuel deliveries and tank alarms are archived additionally in a database.

The display board is operated by a touch screen. Special attention was given to ergonomics when determining the size of the function keys.

If required, all of the displayed tank information can be printed out using the integrated printer (option). Moreover, obligatory print-outs for alarm messages are possible. An audio warning sounds in addition to tank alarms.

Data Management

- » Volumetric display of tank contents
- » Temperature-compensated volume
- » Product temperature
- » Ullage
- » Tank and product name
- » Water level
- » Variable number of displayed tanks (16 tanks maximum)
- » Alarm messages and logging
- » History records (delivery data and alarms)
- » Archiving of delivery data and alarms in a database

Design

VISY-Command GUI	
Housing	Up to 8 sensor terminals: H 300 x W 300 x D 175 [mm] 16 sensor terminals: H 300 x W 400 x D 175 [mm]
Casing protection	IP20
Weight	6.7 kg 10.7 kg
Ambient temperature	0 °C to +40 °C
Supply	230 V _{AC} ± 10 %, approx. 50 VA
Internal display	5.7" TFT touch screen
Number of sensor terminals	2, 4 or 8 16
Host interface (RS232 / RS485) – Ethernet module (MoxaNPort5110) for long distance scanning – Modem for long distance scanning	standard optional optional
Service interface (RS232) – Modem for long distance scanning	standard optional
Extension interface (RS485) – VISY-View Touch display	standard optional
VISY-ICI 485 module – VISY-Output (relay outputs) – VISY-Input (digital switch inputs)	optional optional optional
Printer	optional

Functions

VISY-Command GUI	
Communication with the PoS / BOS system or petrol station controller	standard
Automatic filler recognition	standard
Static leak detection	standard