

LATITUDE™

FUEL DISPENSER

Modern design combined with improved performance.

The Latitude™ dispenser by Gilbarco Veeder-Root is a perfect blend of enhanced performance and sleek design that will draw vehicles to your station. Its innovative features are designed to make functioning easier and help you increase profits at your station.



New Age
Design



InMedia
Display



EasyView
Display



Unparalleled
Security



Powersafe
Electronics



Opti-flow
Hydraulics



LS-200

The Latitude™ fuel dispenser at a glance



New age design

Fresh design that attracts more drive-ins to your station



Scalability for future expansion

Protect capital investment for future technology innovations



Powersafe Electronics

Perform in varying power conditions



Unparalleled Security

Protect your assets as well as brand equity from tampering instances

Easy Hose

Improved Ergonomics

Easy View Display

Win consumer trust with display visible in daylight conditions

Projected Nozzle Boot

Ease of replacements and reduced miss-hits

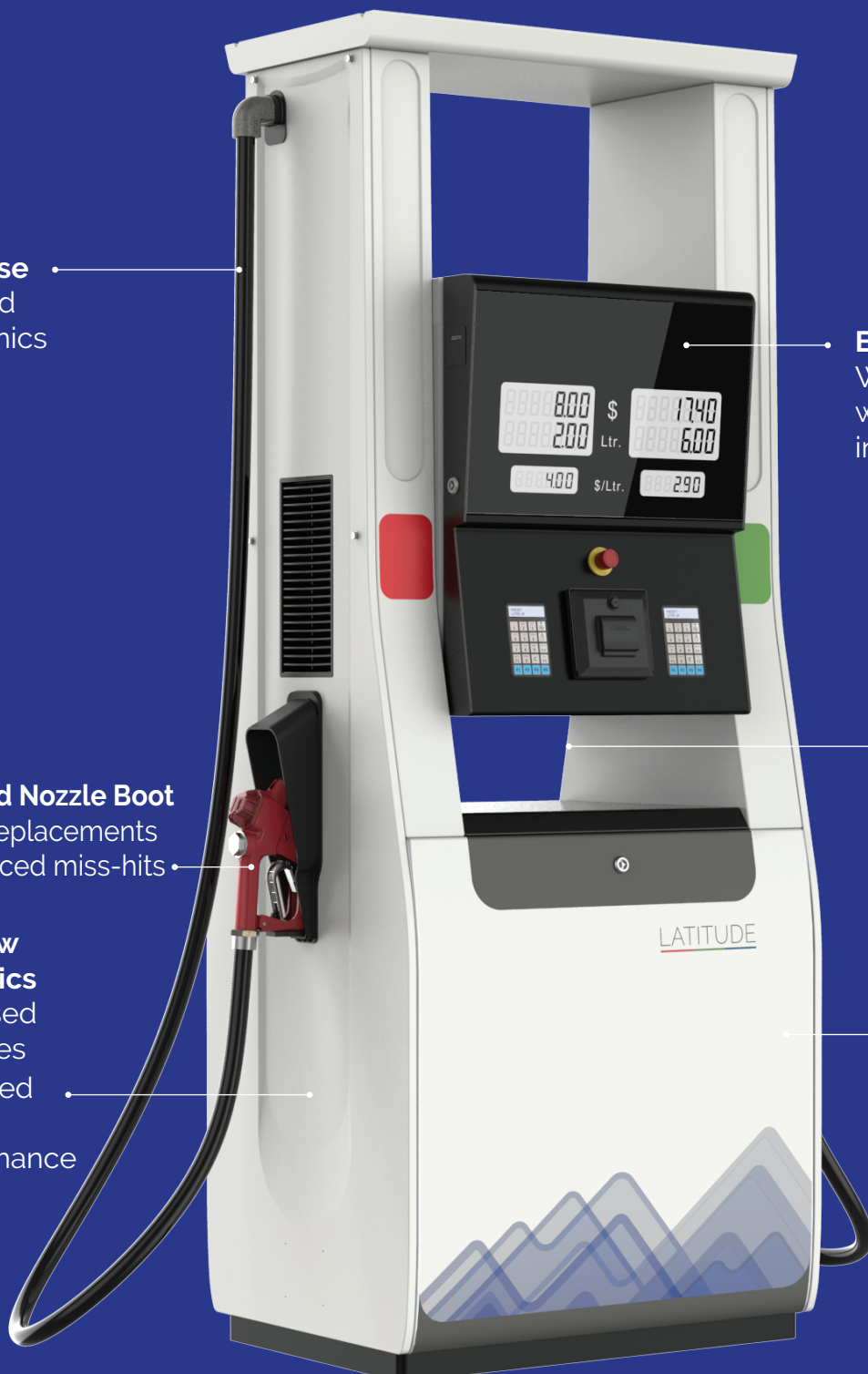
Opti-flow Hydraulics

- Increased flowrates
- Improved suction performance

See-through Design

Max Filters

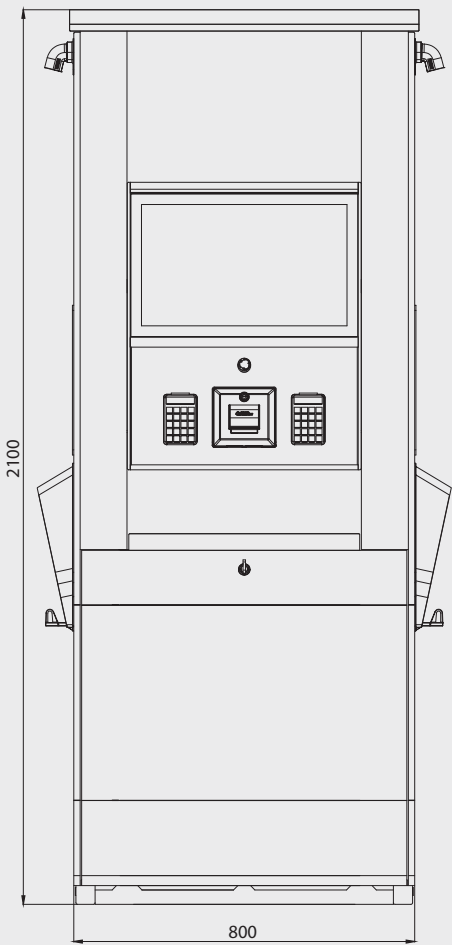
50% more effective filtration



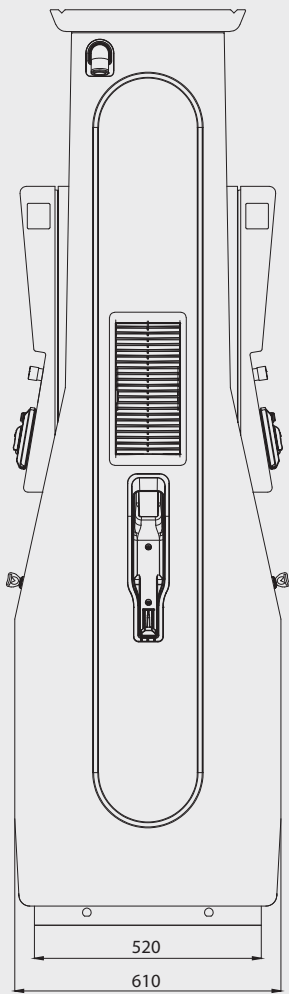
Note - Colors/shades in images may look slightly different than the actual colors available. Please reach out to your Sales Representative or Customer Service Manager in case of doubt or to seek any specific details.

Technical Specifications & Foundation Layout

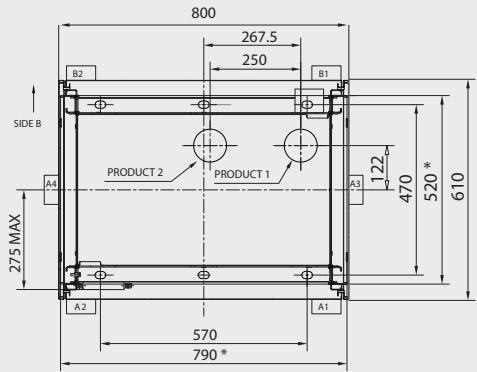
Front View



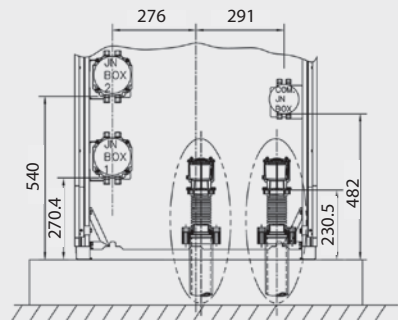
Side View



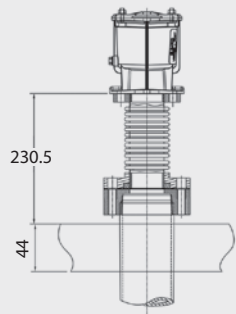
Foundation Layout - Suction



Junction Box Layout



Inlet Connection



LS-200 Island Configurations



1 Grade, 1 Hose, 2 Display

- 2 Sides
- 1 Inlet
- 1 Grade Dispensed

Model Identifier

Type	Standard Flow	High Flow
Suction	LS200-S1S	LS200-H1S
Pressure	LS200-S1P	LS200-H1P



1 Grade, 2 Hose, 4 Display

- 2 Sides
- 1 Inlet
- 1 Grade Dispensed

Model Identifier

Type	Standard Flow	High Flow
Suction	LS200-S2S	LS200-H2S
Pressure	LS200-S2P	LS200-H2P



2 Grade, 2 Hose, 4 Display

- 2 Sides
- 2 Inlets
- 2 Grades Dispensed

Model Identifier

Type	Standard Flow	High Flow
Suction	LS200-S3S	LS200-H3S
Pressure	LS200-S3P	LS200-H3P

Note: Inlet and Nozzle locations are displayed for representative purpose only. Contact GVR customer service representative for more details.

Technical Specifications

		LATITUDE LS-200 Island	
Features	Flowrate Options	Standard Flow (Gasoline/Diesel)	High Flow (Diesel)
	Delivery Speed*	Up to 40 - 50 L / Min	70 - 80 L / Min
	Market Availability	Middle East, Africa & South East Asia	
	Dimensions H x W x D (cms)	210 x 95x 61 - Unit 225 x 103 x 74- Packaging	
	Transport Efficiency (fitment in a 40ft container)	32	
	Approvals	ATEX, MID, OIML	
	Fuel Compatibility	Upto 10% Ethanol content & 5% Biodiesel content	
	Max. No. of Fuel Grades / Meters	2 Grades / 2 Meters	
	Hose Management	EasyHose with Non-obstructing Money Volume Display View	
	Lighted Canopy with Skylight (Option)	✓	✓
	Multimedia 15.6" Screen (Option)	✓	✓
	Brandview Canopy	✓	✓
	Pump Stop (Option)	✓	✓
	Vapor Recovery (Option)	✗	
	Noise Level - 69dB** (Suction Model)	✓	✓
Hydraulics Options	Metering Unit	Gilbarco HD Meter with improved e-Calibration	
	Pulsar	Secure pulsar with lift-off detection	
	Motor (Suction Model)	Standard: 1 Phase, 220 - 240 Vac Option: 3 Phase, 380 - 440 Vac	
	Pump Filter Type	Washable Filter	
	Meter Filter Type	Standard: Replaceable / Washable***	
	GPU-go Pumping Unit	Standard Vane Option Gear	Standard: Vane Option: Gear
	Display Technology	High Contrast LCD Display with direct sunlight readability	
Electronic Options	Display Size	Money: 7 digits with floating decimals (9,999,999) 40 mm height	
		Volume: 7 digits with floating decimals (9,999,999), 40 mm height	
		PPU: 6 digits with floating decimals (999,999), 25 mm height	
	Matrix Keypad (with 4 + 4 pre-configured preset buttons)	✓	✓
	POS Connectivity	Gilbarco 2 Wire Protocol Option: IFSF Protocol	
	Electronics Power Supply	Single Phase: 90 - 360 Vac ⁺	
	Totalizer (Cumulative & Daily)	12 Digits (999999999,999)	
	Ticket Printer (Option)	✓	✓
	Secure EMT (Option)	✓	✓
	Motor Over-voltage Protection	✓	✓
	Electronically Adjustable Flowrate (Option)	✓	✓
	Electromechanical Totalizer (Option)	Enhanced Security EMT 7 digit Totalizer (9999999) with 1 Liter resolution	

* Flow measured at site may vary based on installation conditions.

** Performance tested in specific installation conditions.

*** Contact your customer service representative for more details.

+ 360 Vac sustained for 3 hours continuously.