

LATITUDE™

FUEL DISPENSER

Modern design combined with improved performance.

The Latitude™ dispenser by Gilbarco Veeder-Root is a perfect blend of enhanced performance and sleek design that will draw vehicles to your station. Its innovative features are designed to make functioning easier and help you increase profits at your station.



**New Age
Design**



**InMedia
Display**



**EasyView
Display**



**Unparalleled
Security**



**Powersafe
Electronics**



**Opti-flow
Hydraulics**



LS-300

The Latitude™ fuel dispenser at a glance



New age design

Fresh design that attracts more drive-ins to your station



Scalability for future expansion

Protect capital investment for future technology innovations



Powersafe Electronics

Perform in varying power conditions



Unparalleled Security

Protect your assets as well as brand equity from tampering instances

Easy Hose
Improved Ergonomics

Easy View Display
Win consumer trust with display visible in daylight conditions

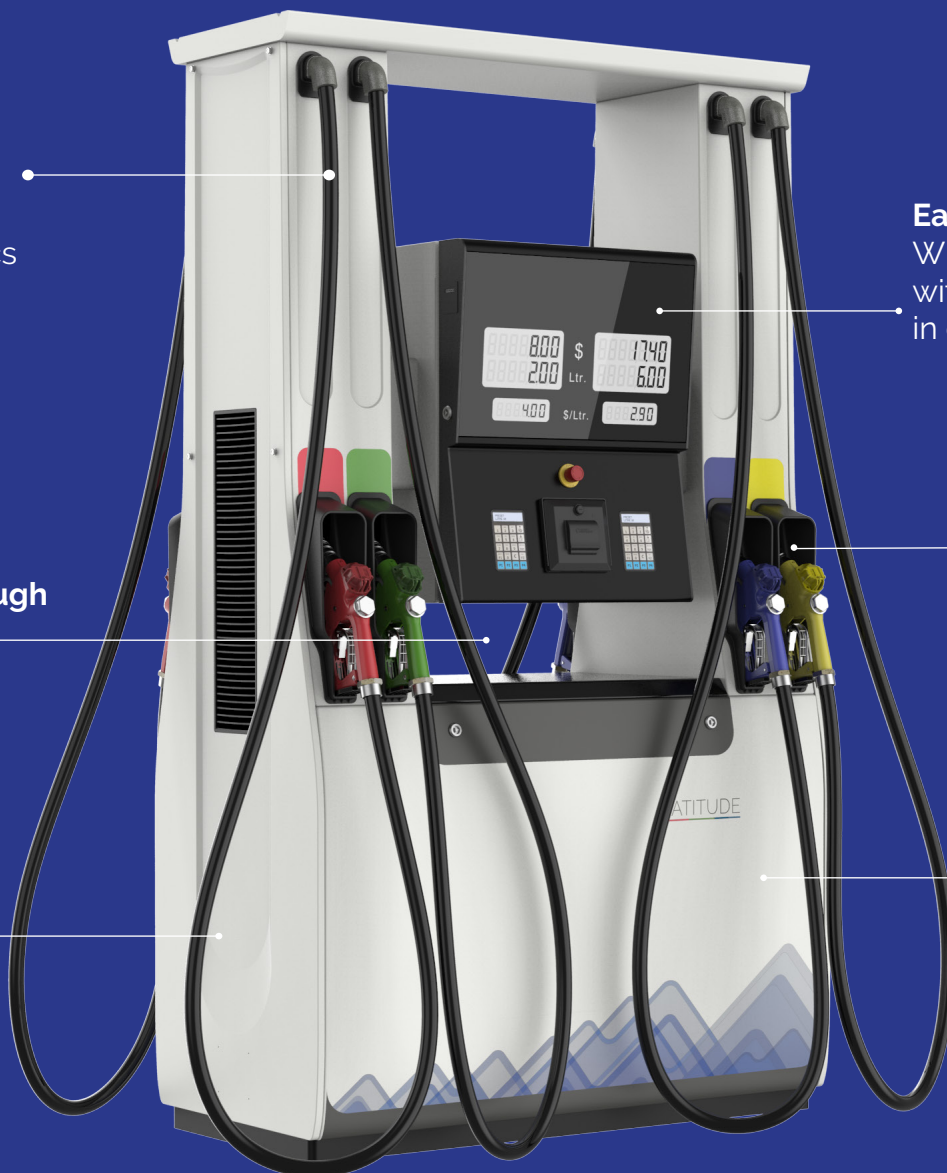
See-through Design

Projected Nozzle Boot
Ease of replacements and reduced miss-hits

Max Filters
50% more effective filtration

Opti-flow Hydraulics

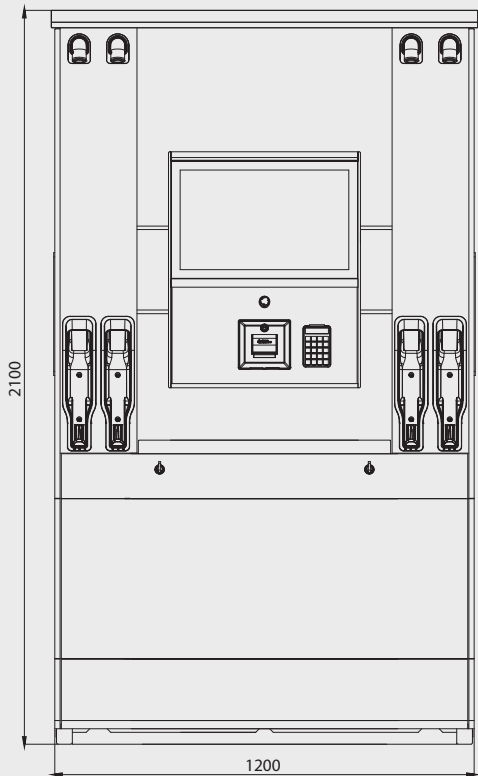
- Increased flowrates
- Improved suction performance



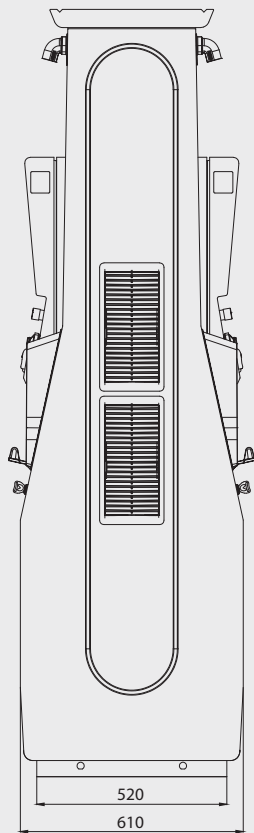
Note - Colors/shades in images may look slightly different than the actual colors available. Please reach out to your Sales Representative or Customer Service Manager in case of doubt or to seek any specific details.

Technical Specifications & Foundation Layout

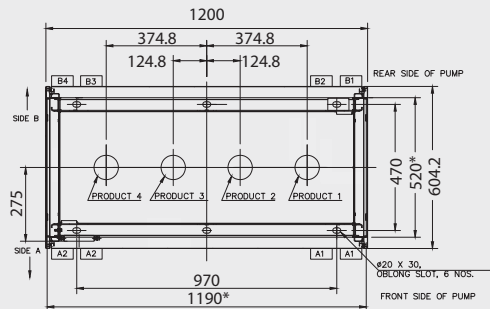
Front View



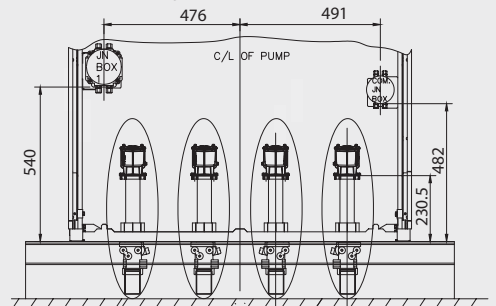
Side View



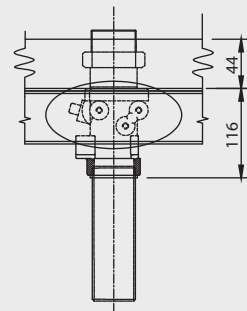
Foundation Layout - Pressure



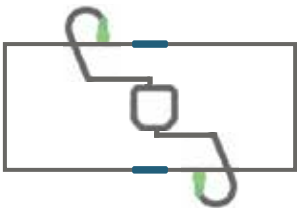
Junction Box Layout



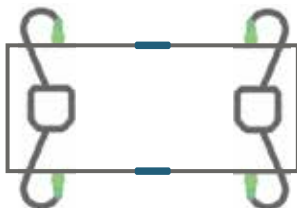
Inlet Connection



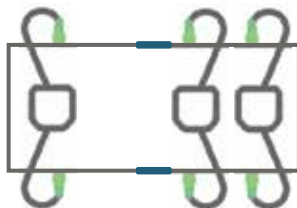
LS-300 Configurations



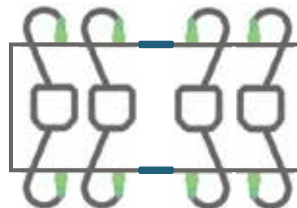
	Standard Flow	High Flow
Suction	LS300-S2SL	LS300-H2SL
Pressure	LS200-S2PL	LS300-H2PL



	Standard Flow	High Flow
Suction	LS300-S4SL	LS300-H4SL
Pressure	LS200-S4PL	LS300-H4PL



	Standard Flow	High Flow
Suction	LS300-S6SL	LS300-H6SL
Pressure	LS200-S6PL	LS300-H6PL



	Standard Flow	High Flow
Suction	LS300-S8SL	LS300-H8SL
Pressure	LS300-S8PL	LS300-H8PL

2Grade 4Hose 4Display

	Standard Flow	High Flow
Suction	LS300-S4S	LS300-H4S
Pressure	LS200-S4P	LS300-H4P

3Grade 6Hose 4Display

	Standard Flow	High Flow
Suction	LS300-S6S	LS300-H6S
Pressure	LS200-S6P	LS300-H6P

4Grade 8Hose 4Display

	Standard Flow	High Flow
Suction	LS300-S8S	LS300-H8S
Pressure	LS200-S8P	LS300-H8P

Note: Inlet and Nozzle locations are displayed for representative purpose only. Contact GVR customer service representative for more details.

Technical Specifications

Features	LATITUDE LS-300		
	Flowrate Options	Standard Flow (Gasoline/Diesel)	High Flow (Diesel)
	Delivery Speed*	Up to 40 - 50 L / Min*	70 - 80 L / Min*
	Market Availability	Middle East, Africa & South East Asia	
	Dimensions H x W x D (cms)	210 x 120 x 61 - Unit 225 x 131 x 74 - Packaging	
	Transport Efficiency (fitment in a 40ft container)	25	
	Approvals	ATEX, MID, OIML	
	Fuel Compatibility	Upto 10% Ethanol content & 5% Biodiesel content	
	Max Number of Fuel Grades / Meters	4 Grades / 8 Meters	
	Hose Management	EasyHose with Non-obstructing Money Volume Display View	
	Lighted Canopy with Skylight (Option)	✓	✓
	Multimedia 15.6" Screen (Option)	✓	✓
	Hose Retraction (Option)	✓	✓
	Pump Stop (Option)	✓	✓
	Vapor Recovery (Option)	✓	✗
	Noise Level - below 69dB** (Suction Model)	✓	✓
Hydraulics Options	Metering Unit	Gilbarco HD Meter with improved e-Calibration	
	Pulsar	Secure pulsar with lift-off detection	
	Motor (Suction Model)	Standard: 1 Phase, 220 - 240 Vac Option: 3 Phase, 380 - 440 Vac	
	Pump Filter Type	Washable Filter	
	Meter Filter Type	Standard: Replaceable / Washable***	
	GPU-90 Pumping Unit	Standard: Vane Option: Gear	Standard: Vane Option: Gear
	Display Technology	High Contrast LCD Display with direct sunlight readability	
Electronic Options	Display Size	Money: 7 digits with floating decimals (9,999,999) 40 mm height	
		Volume: 7 digits with floating decimals (9,999,999), 40 mm height	
		PPU: 6 digits with floating decimals (999,999), 25 mm height	
	Matrix Keypad (with 4 + 4 pre-configured preset buttons)	✓	✓
	POS Connectivity	Gilbarco 2 Wire Protocol Option: IFSF Protocol	
	Electronics Power Supply	Single Phase, 90 - 360 Vac [†]	
	Totalizer (Cumulative & Daily)	12 Digits (999999999.999)	
	Ticket Printer (Option)	✓	✓
	Secure EMT (Option)	✓	✓
	Motor Over-voltage Protection	✓	✓
	Electronically Adjustable Flowrate (Option)	✓	✓
	Electromechanical Totalizer (Option)	Enhanced Security EMT 7 digit Totalizer (9999999) with 1 Liter resolution	

* Flow measured at site may vary based on installation conditions.

** Measured in specific installation conditions.

*** Contact your customer service representative for more details.

[†] 360 Vac sustained for 3 hours continuously.