



# LATITUDE™

FUEL DISPENSER

**Modern design** combined with improved performance.

The Latitude™ dispenser by Gilbarco Veeder-Root is a perfect blend of enhanced performance and sleek design that will draw vehicles to your station. Its innovative features are designed to make functioning easier and help you increase profits at your station.



New Age  
Design



InMedia  
Display



EasyView  
Display



Unparalleled  
Security



Powersafe  
Electronics



Opti-flow  
Hydraulics



**LS-300 CRIND®**

# The Latitude™ fuel dispenser at a glance



## New age design

Fresh design that attracts more drive-ins to your station



## Scalability for future expansion

Protect capital investment for future technology innovations



## Powersafe Electronics

Perform in varying power conditions



## Unparalleled Security

Protect your assets as well as brand equity from tampering instances

## Easy Hose

Improved Ergonomics

## Projected Nozzle Boot

Ease of replacements and reduced miss-hits

## See-through Design

## Max Filters

50% more effective filtration

## Easy View Display

Win consumer trust with display visible in daylight conditions

## Invenco FlexPay™ 6

A1-05/A2-09

CRIND® Retrofit Provision

## Opti-flow Hydraulics

- Increased flowrates
- Improved suction performance



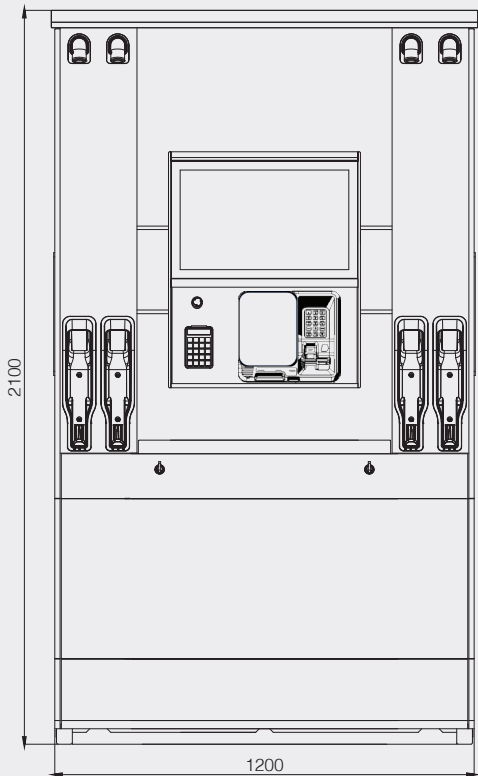
Winner of the GOOD DESIGN® 2022 award

**Note -** Colors/shades in images may look slightly different than the actual colors available. Please reach out to your Sales Representative or Customer Service Manager in case of doubt or to seek any specific details.

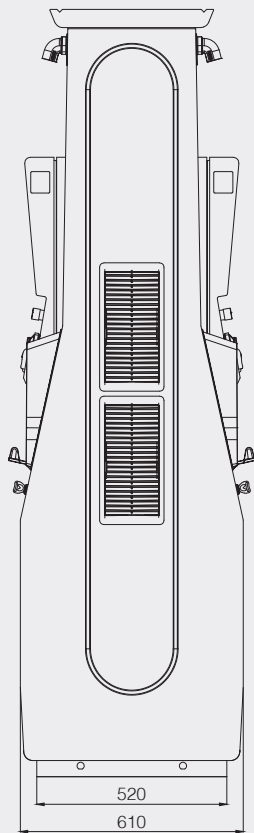


# Technical Specifications & Foundation Layout

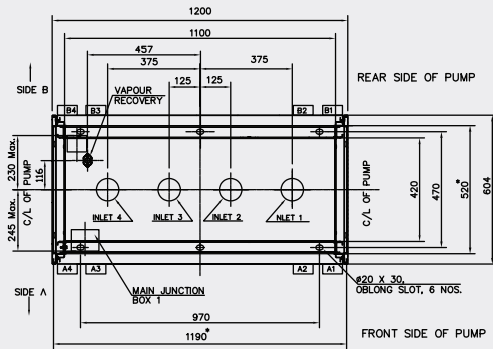
Front View



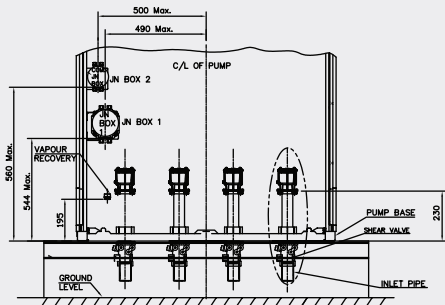
Side View



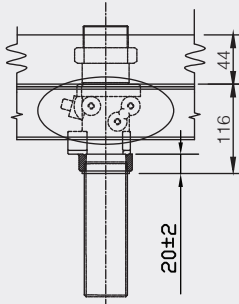
Foundation Layout - Pressure



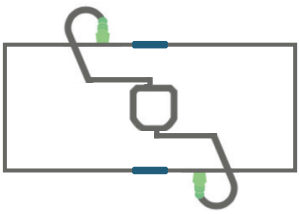
Junction Box Layout



Inlet Connection

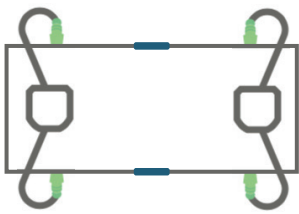


## LS-300 CRIND® Configurations



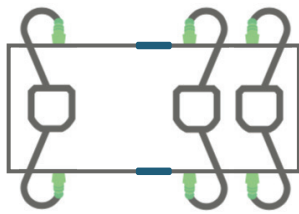
1Grade 2Hose 2Display

	Standard Flow	High Flow
Suction	LS300-S2SL	LS300-H2SL
Pressure	LS300-S2PL	LS300-H2PL



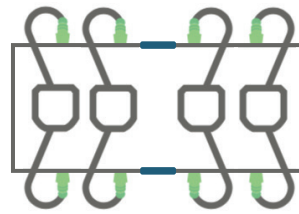
2Grade 4Hose 2Display

	Standard Flow	High Flow
Suction	LS300-S4SL	LS300-H4SL
Pressure	LS300-S4PL	LS300-H4PL



3Grade 6Hose 2Display

	Standard Flow	High Flow
Suction	LS300-S6SL	LS300-H6SL
Pressure	LS300-S6PL	LS300-H6PL



4Grade 8Hose 2Display

	Standard Flow	High Flow
Suction	LS300-S8SL	LS300-H8SL
Pressure	LS300-S8PL	LS300-H8PL

Note: Inlet and Nozzle locations are displayed for representative purpose only. Contact GVR customer service representative for more details.

## Technical Specifications

Features		LATITUDE LS-300 CRIND®	
	Flowrate Options	Standard Flow (Gasoline/Diesel)	High Flow (Diesel)
	Delivery Speed*	Up to 40 - 50 L / Min*	70 - 80 L / Min*
	Market Availability	Middle East, Africa & South East Asia	
	Dimensions H x W x D (cms)	210 x 120 x 61 - Unit   225 x 131 x 74 - Packaging	
	Transport Efficiency (fitment in a 40ft container)	25	
	Approvals	ATEX, MID, OIML	
	Fuel Compatibility**	<b>E20</b> : Ethanol mixed petrol up to 20% / <b>B20</b> : Biodiesel mixed up to 20%	
	Max Number of Fuel Grades / Meters	4 Grades / 8 Meters	
	Hose Management	EasyHose with Non-obstructing Money Volume Display View	
	Lighted Canopy with Skylight (Option)	✓	✓
	Multimedia 15.6" Screen (Option)	✗	✗
	Hose Retraction (Option)	✓	✓
	Pump Stop (Option)	✓	✓
	Vapor Recovery (Option)	✓	✓
	Noise Level - below 69dB*** (Suction Model)	✓	✓
	CRIND® Retrofit Provision	FlexPay™ 6 A1-05/A2-09	
Hydraulics Options	Metering Unit	Gilbarco HD Meter with improved e-Calibration	
	Pulser	Secure pulser with lift-off detection	
	Motor (Suction Model)	Standard: 1 Phase, 220 - 240 Vac   Option: 3 Phase, 380 - 440 Vac	
	Pump Filter Type	Washable Filter	
	Meter Filter Type	Standard: Replaceable   Option: Washable	
	GPU-90 Pumping Unit	Standard: Gear	
Electronic Options	Display Technology	High Contrast LCD Display with direct sunlight readability	
	Display Size	Money: 7 digits with floating decimals (9,999,999) 40 mm height	
		Volume: 7 digits with floating decimals (9,999,999), 40 mm height	
		PPU: 6 digits with floating decimals (999,999), 25 mm height	
	Matrix Keypad (with 4 + 4 pre-configured preset buttons)	✓	✓
	POS Connectivity	Gilbarco 2 Wire Protocol   Option: IFSF Protocol	
	Electronics Power Supply	Single Phase, 90 - 360 Vac <sup>+</sup>	
	Totalizer (Cumulative & Daily)	12 Digits (999999999.999)	
	Ticket Printer (Option)	✗	✗
	Secure EMT	✓	✓
	Motor Over-voltage Protection	✓	✓
	Electronically Adjustable Flowrate (Option)	✓	✓
	Electromechanical Totalizer (Option)	Enhanced Security EMT   7 digit Totalizer (9999999) with 1 Liter resolution	

\*Flow measured at site may vary based on installation conditions.

\*\*Contact your customer service representative for more details.

\*\*\*Measured in specific installation conditions.

<sup>+</sup> 360 Vac sustained for 3 hours continuously.